

SOUNDINGS IN FEET

UNITED STATES - EAST COAST
VIRGINIA
HAMPTON ROADS

Mercator Projection
Scale 1:20,000 at Lat. 36°57'
North American Datum of 1983
World Geodetic System 1984

SOUNDINGS IN FEET
AT MEAN LOWER LOW WATER

Additional information can be obtained at nauticcharts.noaa.gov.

NAME	PLACES	HEIGHT/DEPTH	CHARACTER	REMARKS
Old Point Comfort	131°07'N 76°51'W	55	S	See note 2
Fort Monroe	131°07'N 76°51'W	28	S	See note 2
Newport News	131°07'N 76°51'W	28	S	See note 2

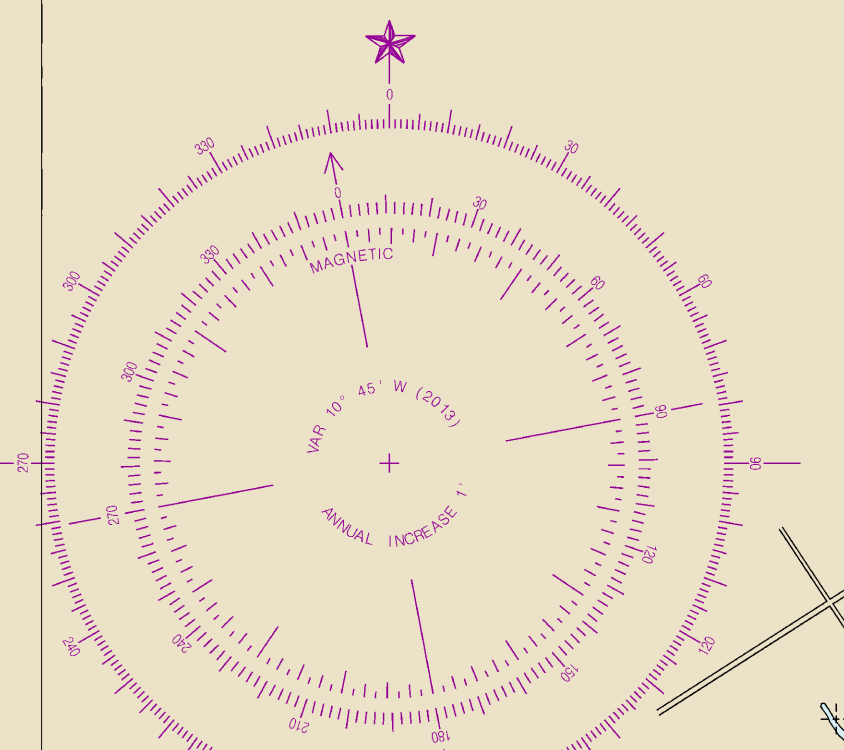
HORIZONTAL DATUM
The horizontal datum of this chart is North American Datum of 1983 (NAD 83), which for all practical purposes is considered equivalent to the World Geodetic System 1984 (WGS 84). Geographic positions referred to the North American Datum of 1983 must be corrected an average of 0.533" northward and 0.266" eastward with respect to the chart.

VERTICAL DATUM
The vertical datum of this chart is Mean Lower Low Water (MLLW) of the North American Datum of 1983 (NAD 83). For all practical purposes, MLLW is considered equivalent to the World Geodetic System 1984 (WGS 84) datum.

Navigation regulations are published in Chapter 2, U.S. Coast Pilot 3. Additional regulations to Chapter 2 are published in the U.S. Coast Pilot 3 Addendum. Information concerning regulations may be obtained at the Office of the Commander, U.S. Coast Guard District of Portsmouth, Virginia, or the Office of the District Engineer, Corps of Engineers in Norfolk, Virginia.

For further regulator section numbers, refer to the District Engineer's office.

SCALE 1:20,000
Nautical Miles



ANCHORAGE AREAS
Limits and designations of anchorage areas are shown in magenta.

COMMERCIAL EXPLOSIVES ANCHORAGE
NAVAL EXPLOSIVES ANCHORAGE
EXPLOSIVES HANDLING BERTH
ALL OTHER BERTHS ARE FOR GENERAL USE
ALL OTHER ANCHORAGES ARE FOR GENERAL USE

NOTED
EMERGENCY RESTRICTED AREA
For the latest information regarding the regulations of any emergency restricted area, contact the U.S. Coast Guard Sector of Portsmouth, Norfolk, Virginia Regulatory Branch at (757) 261-1950/7652.

CAUTION
Submarine pipelines and cables
Change submarine pipelines and submarine cables and submarine pipeline and cable area boundaries.

CAUTION
Submarine pipelines and cables
Change submarine pipelines and submarine cables and submarine pipeline and cable area boundaries.

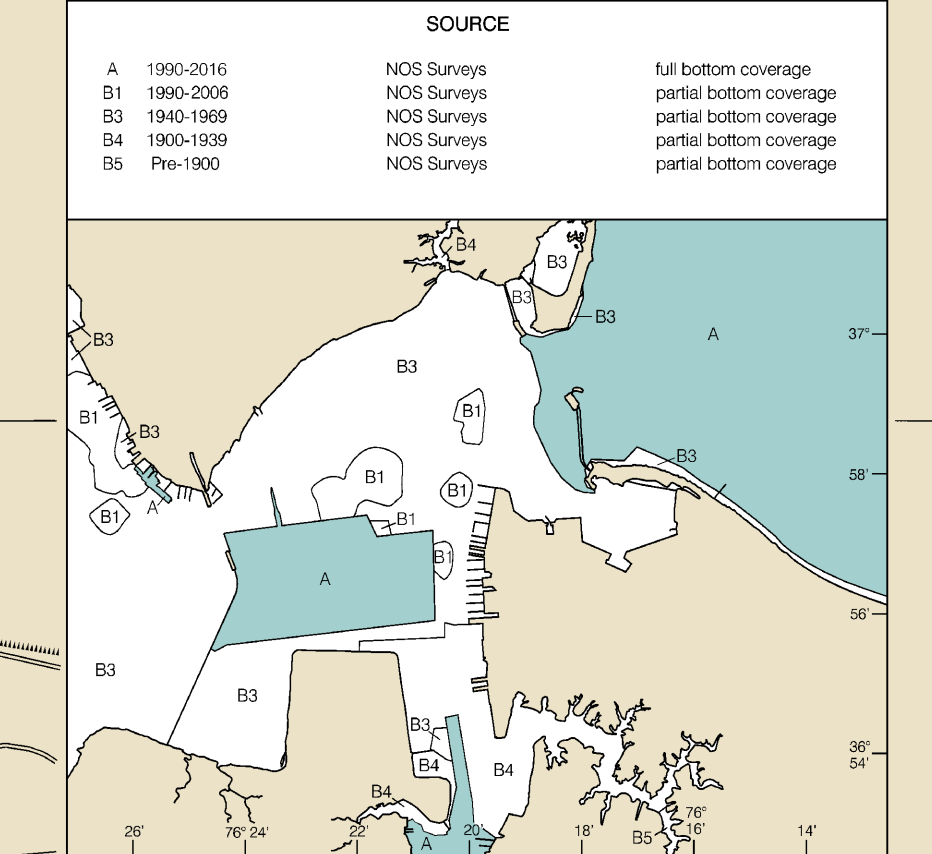
CAUTION
Submarine pipelines and cables
Change submarine pipelines and submarine cables and submarine pipeline and cable area boundaries.

CAUTION
Submarine pipelines and cables
Change submarine pipelines and submarine cables and submarine pipeline and cable area boundaries.

NOTE
The Newport News Canal is a navigational channel that extends 3.5 miles along its length from the station A through E. The channel lies to the right of the station A through E. The channel lies to the right of the station A through E. The channel lies to the right of the station A through E. The channel lies to the right of the station A through E.

SOURCE DIAGRAM
The soundings represent the levels of the most recent hydrographic survey information that has been available for editing. Soundings have been tabulated in the diagram by date and type of soundings. Channels, restricted areas, and other information are generally restricted and are not shown on the diagram. Refer to Chapter 1, U.S. Coast Pilot 3.

NO. OF SOUNDINGS	DATE	TYPE
A	1990-2016	NCE Surveys
B	1980-2009	NCE Surveys
C	1960-1980	NCE Surveys
D	1940-1960	NCE Surveys
E	1910-1940	NCE Surveys



ABBREVIATIONS
For the complete list of symbols and abbreviations, see Chart No. 1 in the U.S. Coast Pilot 3.

NOAA WEATHER RADIO BROADCASTS
The NOAA Weather Radio station listed below provides continuous weather broadcasts. The reception range is typically 20 to 40 nautical miles from the antenna site, but can be as much as 100 nautical miles for stations at 162.400 MHz.

CAUTION
Laminations on the face of this chart are used to maintain navigational accuracy. Information may be obtained from the U.S. Coast Guard Light List and National Geospatial-Intelligence Agency Publication 171.

RACING BOATS
Racing boats with in the limits of the chart are not shown hereon. Information may be obtained from the U.S. Coast Guard District Office in using other private sources are not at all in the U.S. Coast Guard Light List.

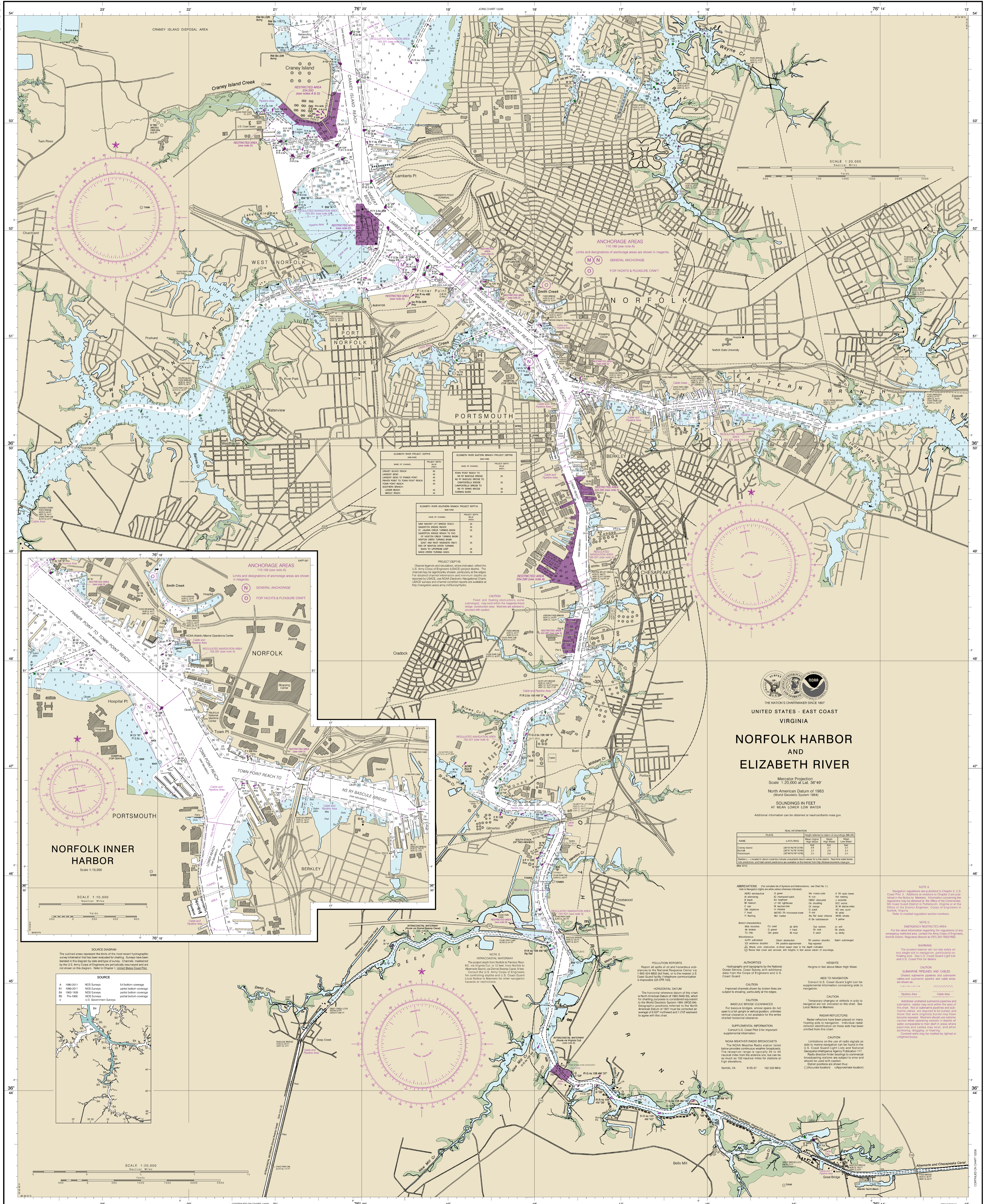
POLLUTION REPORTS
Report all spills of oil and hazardous substances to the National Response Center via the U.S. Coast Guard Light List and National Geospatial-Intelligence Agency Publication 171.

RACING BOATS
Racing boats with in the limits of the chart are not shown hereon. Information may be obtained from the U.S. Coast Guard District Office in using other private sources are not at all in the U.S. Coast Guard Light List.

ADDITIONAL INFORMATION
Consult U.S. Coast Pilot 3 for important supplemental information.

PLANE COORDINATE GRID
The Virginia State Grid South Zone is indicated by dashed lines at 1000-foot intervals.

CAUTION
Fish trap areas and structures
Markers are placed that delineate fish traps and structures. Fish traps and structures are not shown unless known to be permanent. Fish traps and structures are not shown unless known to be permanent. Fish traps and structures are not shown unless known to be permanent.



SOUTHERN BRIDGE PROJECT DEPTHS

NAME OF CHANNEL	PROJECT DEPTH	REMARKS
CRANLEY ISLAND REACH	35	
LAMBERT BRIDGE	35	
PIPPER POINT TO TOWN POINT REACH	35	
TOWN POINT REACH	35	
SOUTHERN BRIDGE	35	
WOLFEY REACH	35	

ELIZABETH RIVER EASTERN BRANCH PROJECT DEPTHS

NAME OF CHANNEL	PROJECT DEPTH	REMARKS
NEW RAILWAY BRIDGE REACH	35	
CRANLEY ISLAND REACH	35	
ST. JAMES CREEK TURNING BASIN	35	
SMITH CREEK TURNING BASIN	35	
WOLFEY CREEK TURNING BASIN	35	
END OF WOLFEY CREEK TURNING BASIN TO TOWN POINT REACH	35	
WOLFEY CREEK TURNING BASIN	35	
WOLFEY CREEK TURNING BASIN	35	

PROJECT DEPTHS

Channel depths and soundings, where indicated, reflect the U.S. Army Corps of Engineers (USACE) project depths. The chart may be significantly greater, particularly in the vicinity of the Elizabeth River and its tributaries. For the most current information and restrictions apply to the project depths, see USACE website: <http://www.usace.army.mil>. USACE surveys and channel condition reports are available at <http://navigation.usace.army.mil/Survey/Reports>.

CAUTION
 Project depths and soundings, where indicated, reflect the U.S. Army Corps of Engineers (USACE) project depths. The chart may be significantly greater, particularly in the vicinity of the Elizabeth River and its tributaries. For the most current information and restrictions apply to the project depths, see USACE website: <http://www.usace.army.mil>. USACE surveys and channel condition reports are available at <http://navigation.usace.army.mil/Survey/Reports>.

THE NATIONAL CHARTMAKER SINCE 1807
UNITED STATES - EAST COAST
VIRGINIA
NORFOLK HARBOR AND ELIZABETH RIVER
 Mercator Projection
 Scale 1:20,000 at Lat. 36° 49'
 North American Datum of 1983
 (World Geodetic System 1984)
SOUNDINGS IN FEET
 AT MEAN LOWER LOW WATER
 Additional information can be obtained at nauticalcharts.noaa.gov.

TRIAL INFORMATION

NAME	SATELITE	Mean High	Mean Low
Chesapeake	GPS (N/19/19W)	3.1	2.2
Portsmouth	GPS (N/19/19W)	3.1	2.2
Norfolk	GPS (N/19/19W)	3.1	2.2

ABBREVIATIONS: For complete list of Symbols and Abbreviations, see Chart No. 1.
 Aids to Navigation: Lights are shown whenever indicated.
 MLD: Manned Life Raft
 A: Alarming
 B: Bell
 C: Can
 D: Daymark
 E: Electric
 F: Fog
 G: Green
 H: Horn
 I: Light
 J: Jet
 K: Keel
 L: Light
 M: Manned
 N: No
 O: Oil
 P: Power
 Q: Quay
 R: Radar
 S: Sound
 T: Tower
 U: Unmanned
 V: Vessel
 W: Water
 X: X-ray
 Y: Yellow
 Z: Zebra

HEIGHTS: Heights in feet above Mean High Water.
AIDS TO NAVIGATION: Consult U.S. Coast Guard Light List for supplemental information concerning aids to navigation.
CAUTION: Temporary changes or defects in aids to navigation are not indicated on this chart. See Local Notice to Mariners.
RADAR REFLECTORS: Radar reflectors have been placed on many floating aids to navigation. Individual radar reflector identification on these aids has been omitted from this chart.
CAUTION: Limitations on the use of radio signals as aids to navigation are found in the U.S. Coast Guard Light List and National Geospatial Intelligence Agency Publication 1-7.
RAILROADS: Railroad lines shown on this chart are subject to change. Station positions are shown by a circle with a cross.
CAUTION: Railroad lines may be marked by lighted or unlighted towers.

NOAA WEATHER RADIO BROADCASTS: The NOAA Weather Radio system, which provides continuous weather forecasts, is available for use in the Norfolk Harbor area. The receiver frequency is 162.400 MHz. The transmitter frequency is 162.475 MHz. The receiver frequency is 162.400 MHz. The transmitter frequency is 162.475 MHz.

POLLUTION REPORTS: Report all spills of oil and hazardous substances to the National Response Center via 1-800-424-6802 (24 hr) or to the nearest U.S. Coast Guard facility. Telephone communication is prohibited 24 hours.

HORIZONTAL DATUM: The horizontal reference datum of this chart is the North American Datum of 1983 (NAD 83), which for charting purposes is considered equivalent to the World Geodetic System 1984 (WGS 84). Geographic positions referred to the North American Datum of 1983 may be converted to WGS 84 by adding 0.007' northward and 1.15' eastward to agree with this chart.

CAUTION: NOAA nautical charts are subject to change. Supplemental information is available at nauticalcharts.noaa.gov.

NOTE A: Navigation regulations are published in Chapter 2, U.S. Coast Pilot 1. Additional information regarding any emergency restricted areas, contact the Army Corps of Engineers, Norfolk District, Regulatory Branch at (757) 261-1000/1002.

NOTE B: The published material will not be valid on any night when the moon is in its full phase.