



Spirit of Norfolk



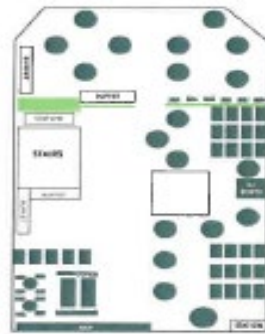


Vessel Specifications

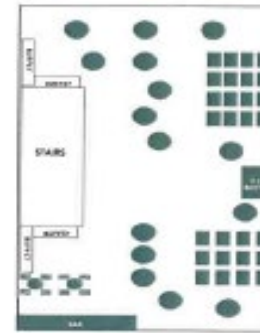
- Richard O’Leary’s dream began in 1978 with one boat in one city
- The current Spirit of Norfolk was built in 1992 and is the 4th boat to be docked in Norfolk
- It is a tiered 3-deck public cruise ship
- Two inside corridors, two climate-controlled decks and one open-air skyline deck
- Interior lounge space on first and second deck
- 187’ long and 40’ wide
- COI is 600 passengers
- Seated capacity 366, reception 425 max, moonlights 475
- Complete cosmetic renovation in 2016
- Green engines implemented in 2019
- Level 1 boarding level along with wheelchair accessible restroom
- Large galley on board



Deck Layout



RIVERVIEW DECK
First Level Deck
Seating Capacity | 206
Bar | 1
Restrooms | 2
Dance Floor | 1
Lounge



HARBORVIEW DECK
Second Level Deck
Seating Capacity | 166
Bar | 1
Restrooms | 2
Dance Floor | 1



SKYLINE DECK
Third Level Deck
Cocktail Style Seating
Year-round Bar



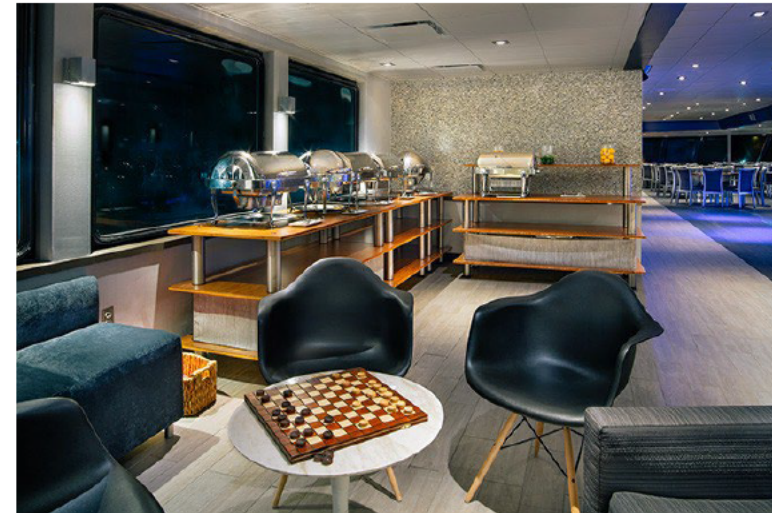


Norfolk – Spirit of Norfolk





Norfolk – Spirit of Norfolk



CG 026



Spirit of Norfolk Powerpoint with vessel features_Promotional_Redacted

