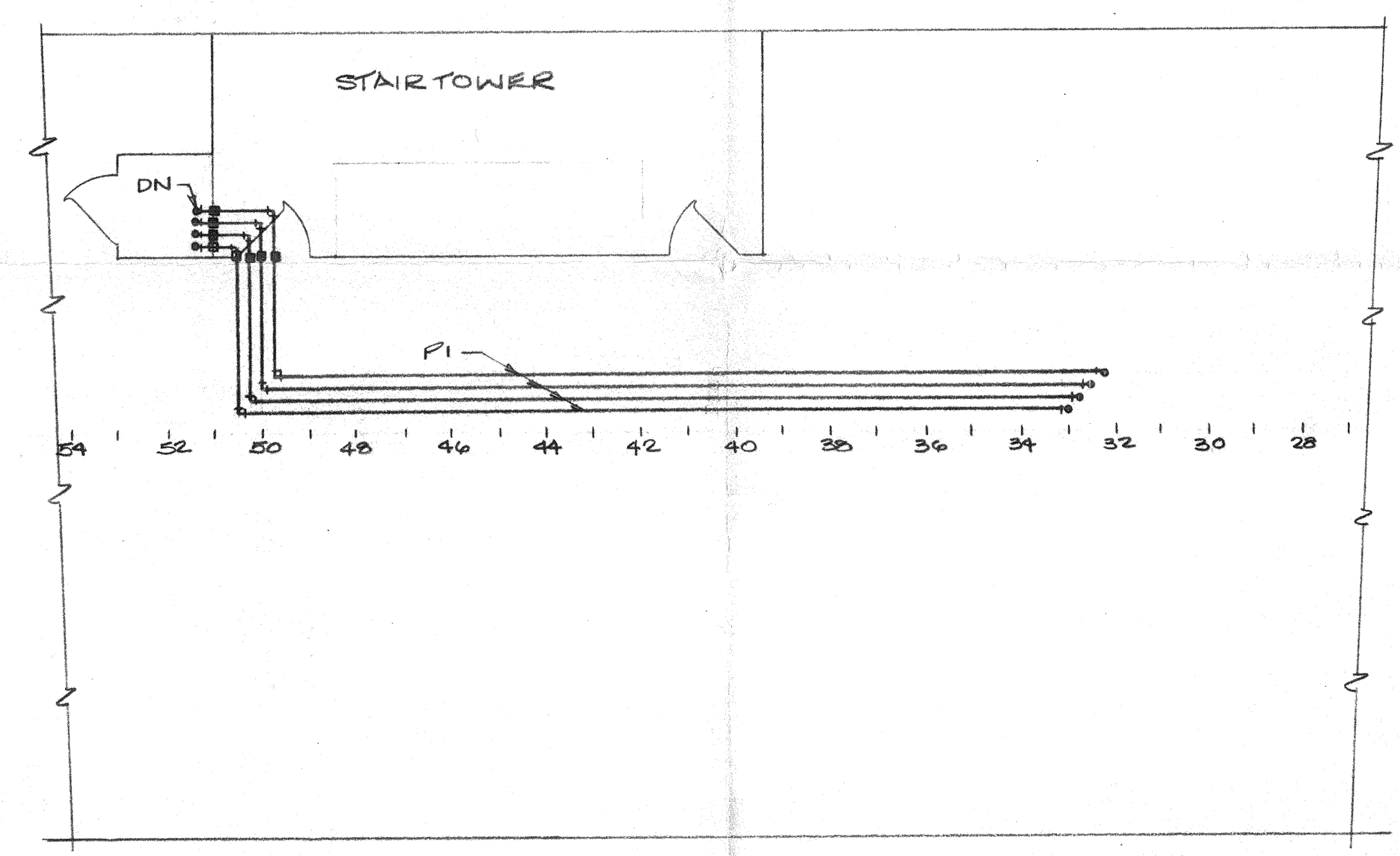
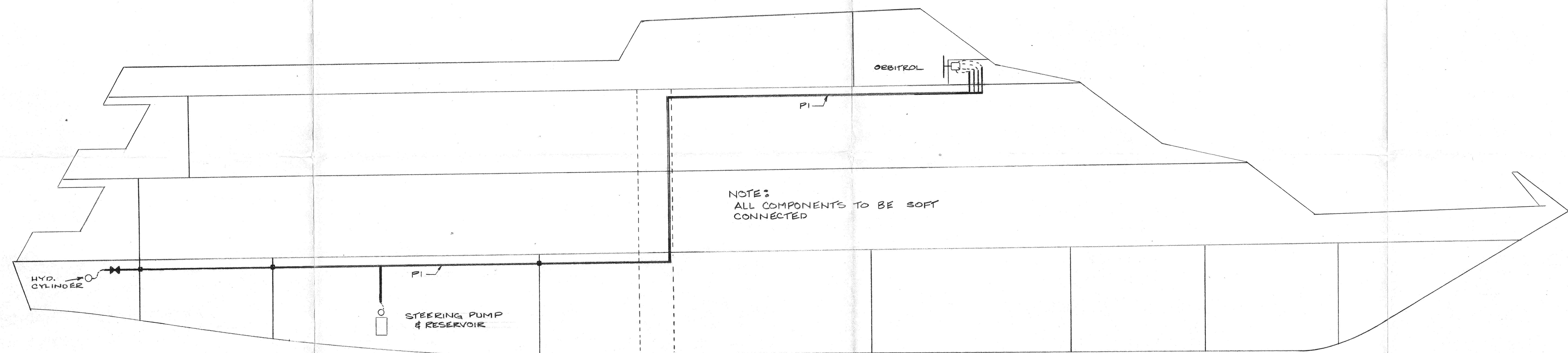
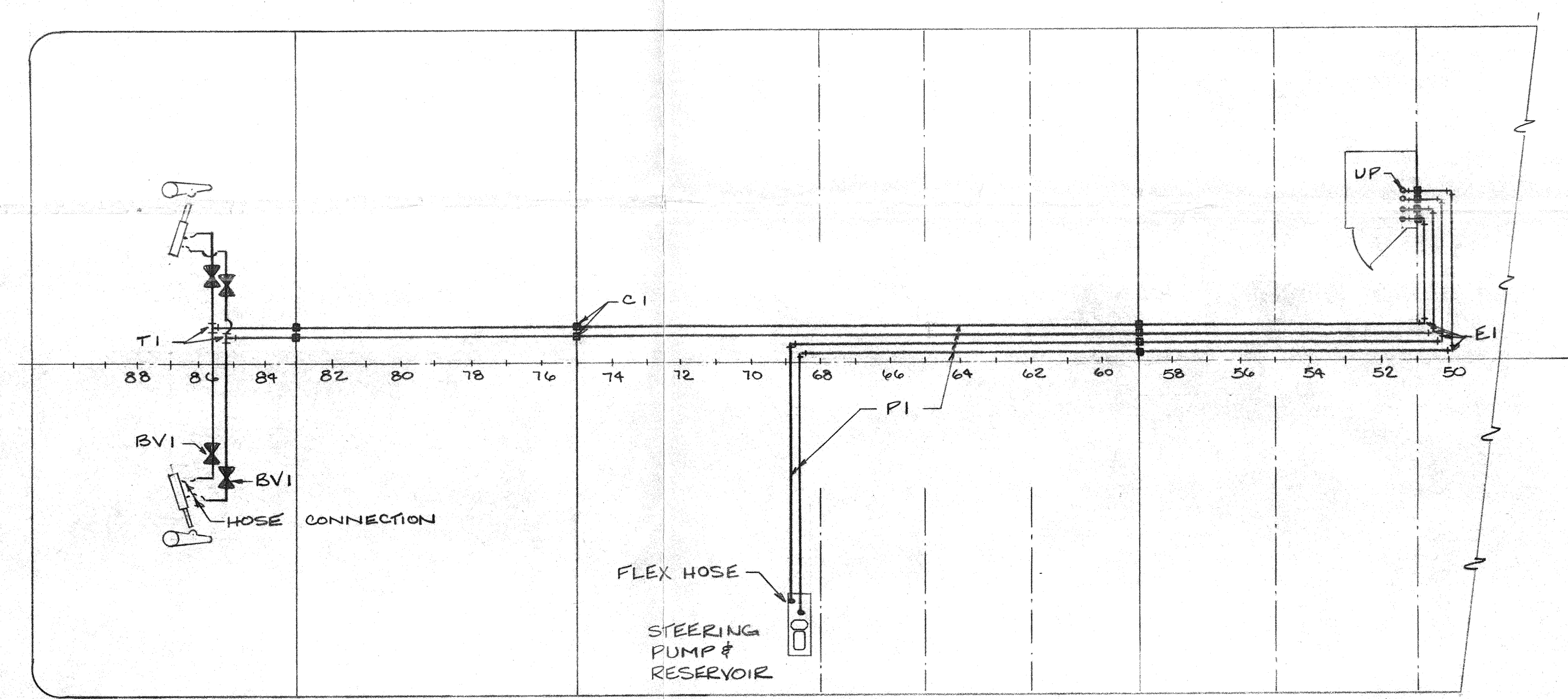


| REVISION | | | |
|----------|------|-------------|--------|
| NO. | DATE | DESCRIPTION | APV'D. |
| | | | |
| | | | |

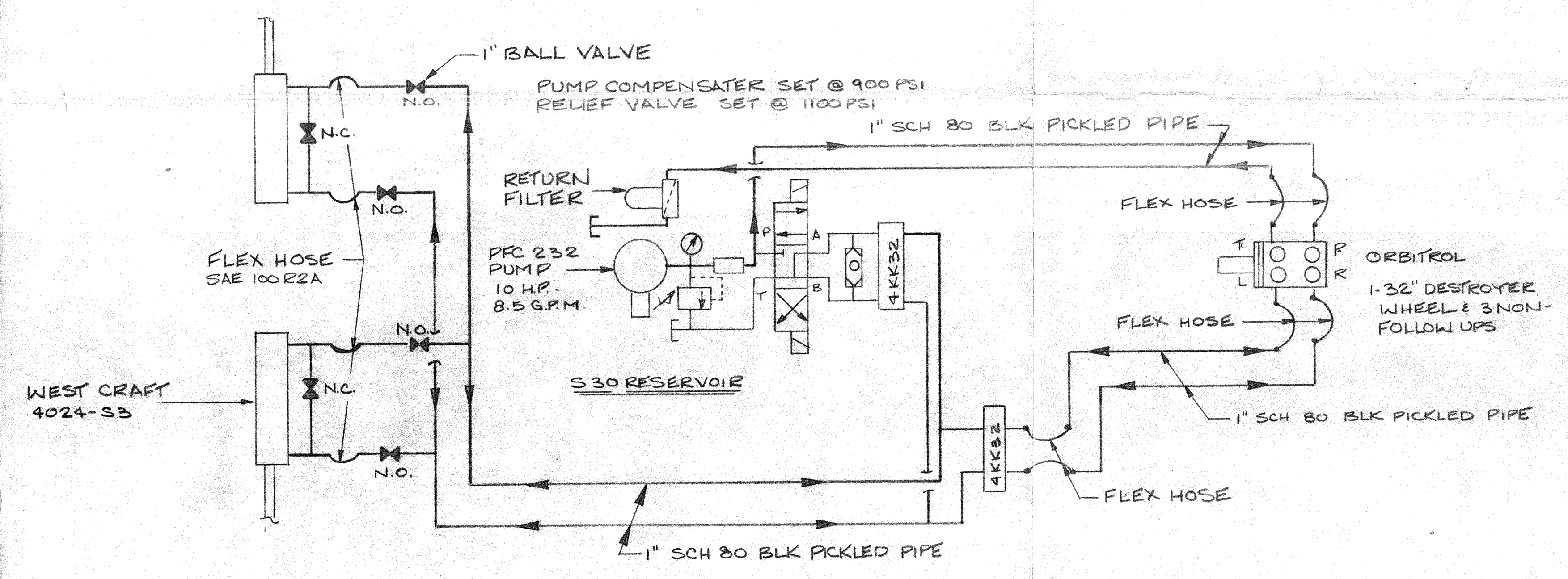


| MARK | QTY | DESCRIPTION | ASTM A-106 |
|------|-----|-----------------------------------|--------------|
| PI | 720 | 1" PIPE SCH 80 SMLS BLK | USAS B16.11- |
| TI | 2 | 1" TEE 3000# SOCKET WELD BLK | |
| EL | 48 | 1" 90° ELL 3000# SOCKET WELD BLK | |
| CI | 36 | 1" COUPLING 3000# SOCKET WELD BLK | |
| BV | 6 | 1" BALL VALVE LANCE - 2000 # | |
| | 10 | HOSE SAE 100 R2A - AERQUIP | |

BELOW 3RD DECK



BELOW MAIN DECK



This drawing is the the exclusive property of Service Marine Industries, Inc. and is furnished on a confidential basis. No portion of this drawing may be copied, traced, photographed, or in any other way reproduced; nor may any item hereon depicted be manufactured as shown without the written consent of Service Marine Industries, Inc. The recipient of the information contained hereon may not disclose the same to any other person or business firm; nor may he use such information except for the specific purpose intended.

18' X 40' X 12'-8"
DINNER/EXCURSION VESSEL
HYDRAULIC STEERING SYSTEM



| | |
|-------------------|------------------|
| SCALE 3/16"=1'-0" | DATE 9-27-91 |
| DRAWN GEORGE | APP'D. |
| HULL NO. 163 | DWG. NO. 040 245 |

Hydraulic Steering Pipe Located on the Port side of Engine Room



Source: Bay Diesel



Source: USCG

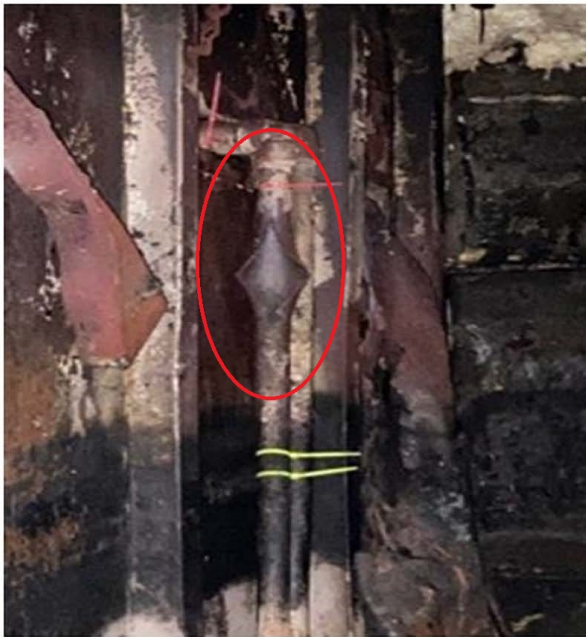


Source: NTSB



Source: USCG

Hydraulic Steering Pipe Located Along Bulkhead in Hydraulic Area of Engine Room



Source: USCG



Source: Castlerock



Source: USCG

Hydraulic Pump Hose Located in the Hydraulic Area of the Engine Room



Source: USCG



Source: Castlerock



Source: USCG

Hydraulic System Pressure Relief Valve



Source: Castlerock



Source: USCG



Source: USCG