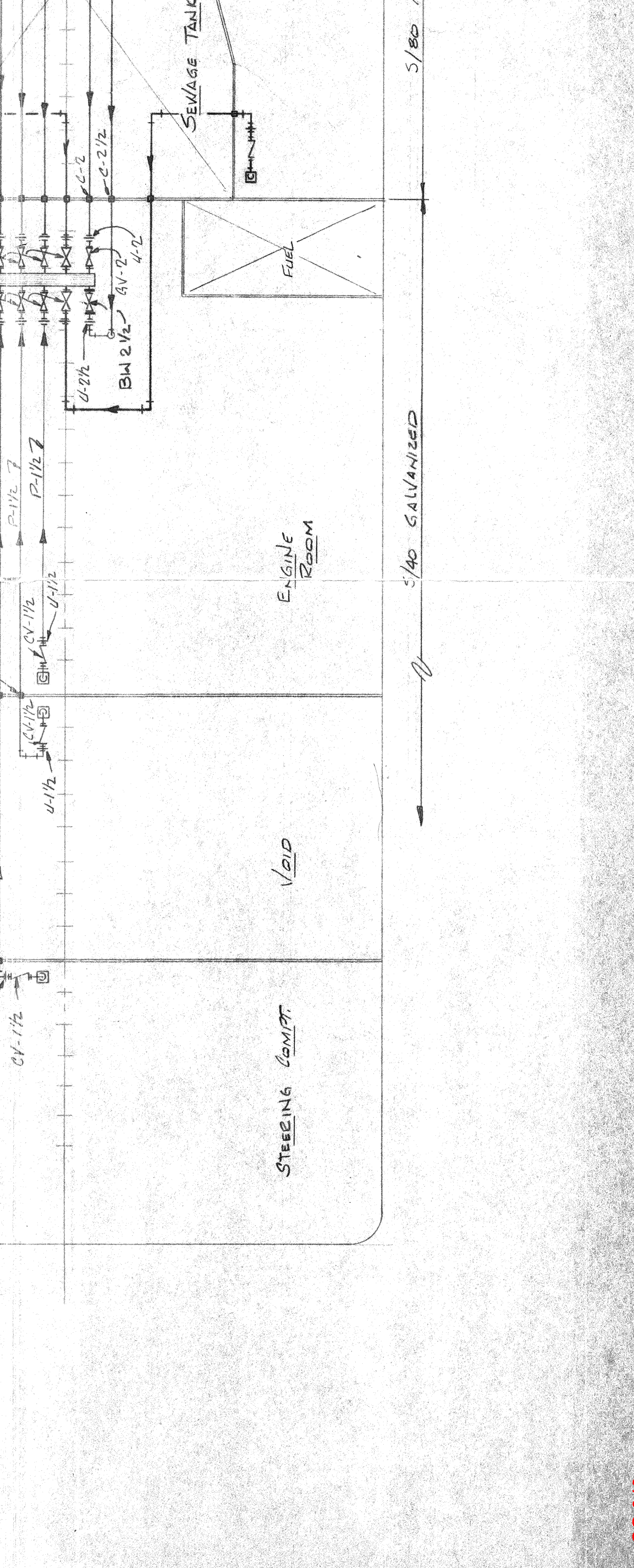
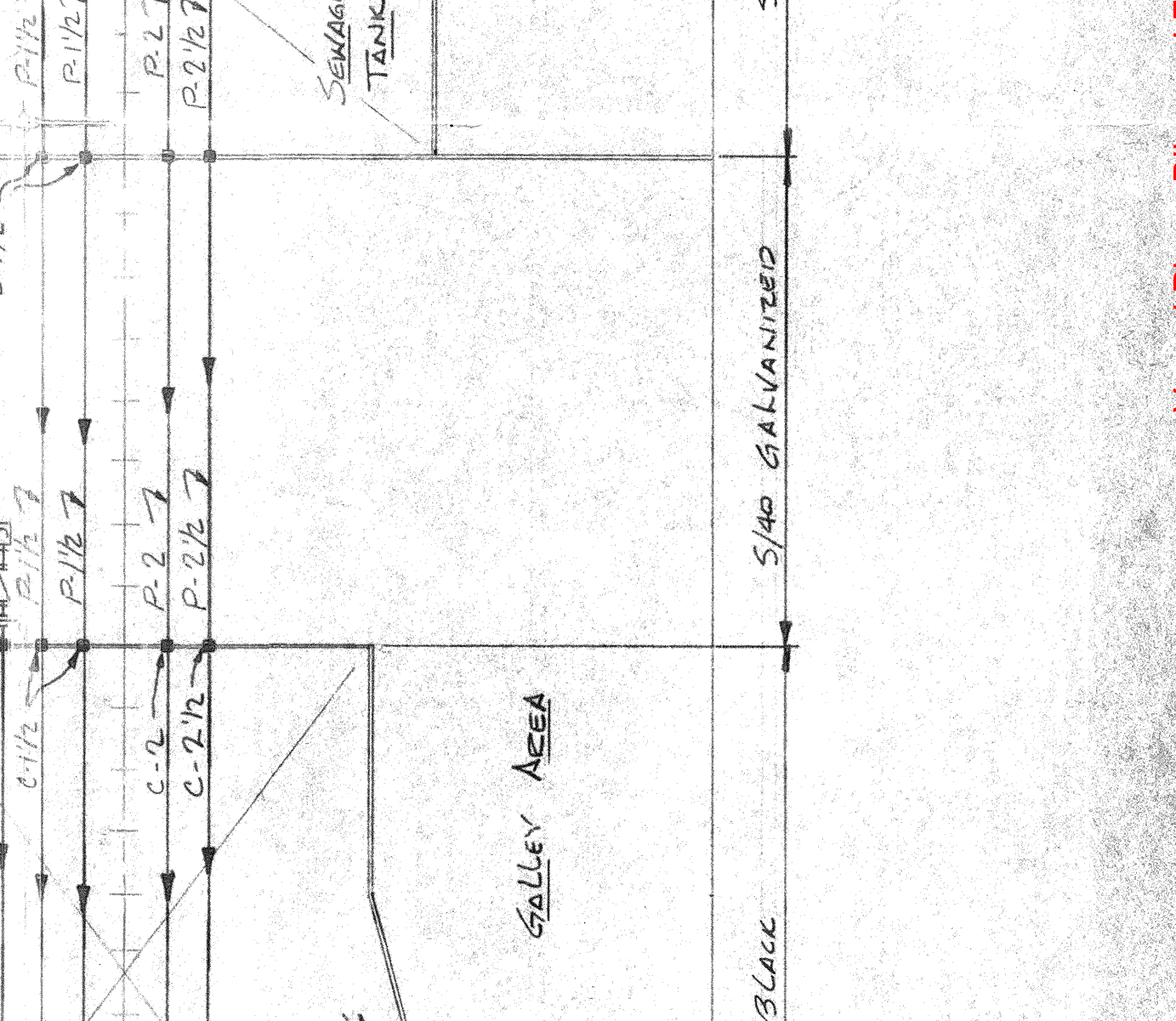
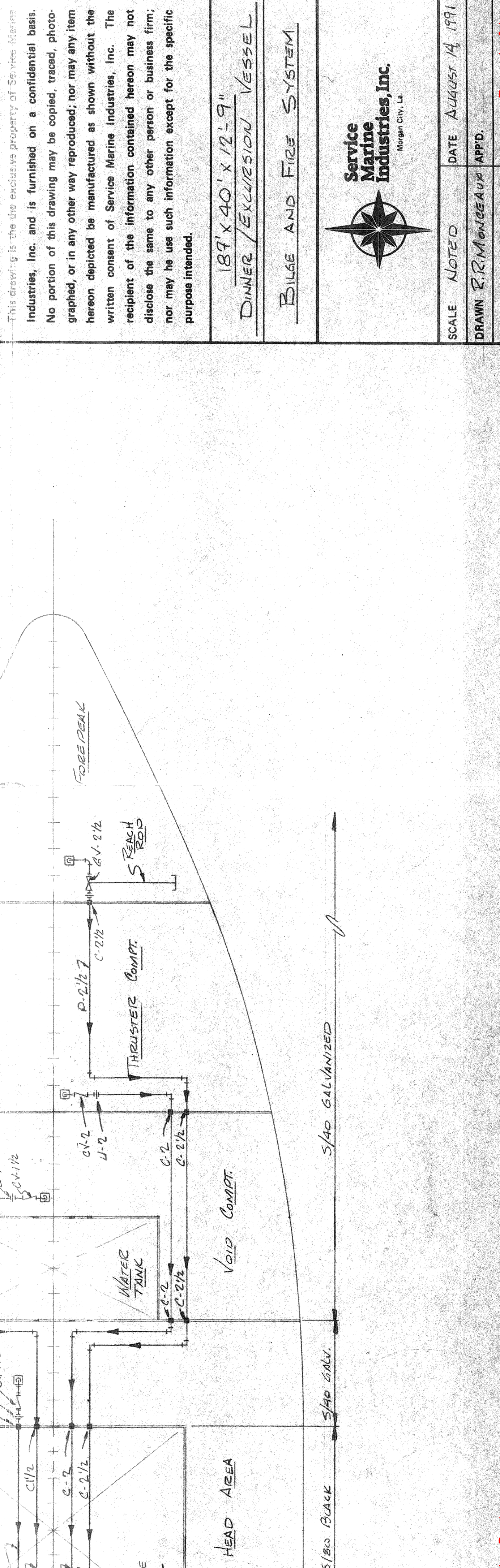
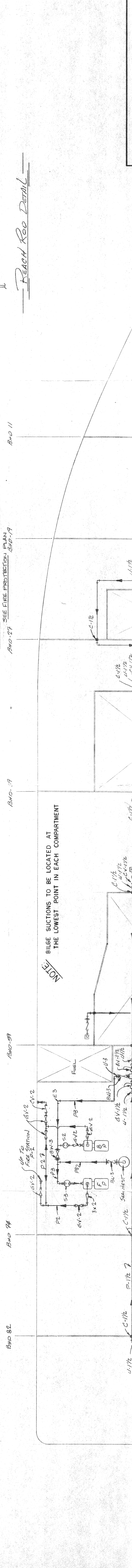
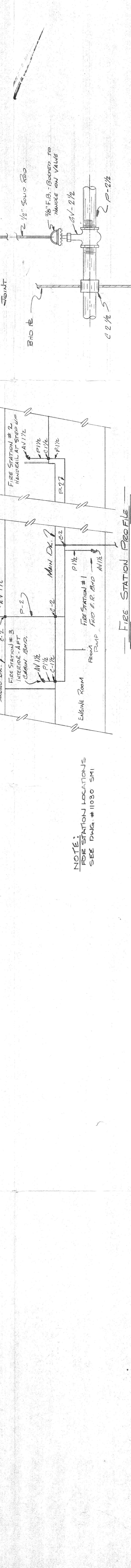


**BILL OF MATERIAL**

| ITEM SPEC. | ITEM DESCRIPTION | QTY | UNIT  | NOTES |
|------------|------------------|-----|-------|-------|
| A1         | 1/2" XHY-BLACK   | 1   | PIECE |       |
| A2         | 3/4" XHY-BLACK   | 1   | PIECE |       |
| A3         | 1" XHY-BLACK     | 1   | PIECE |       |
| A4         | 1 1/2" XHY-BLACK | 1   | PIECE |       |
| A5         | 2" XHY-BLACK     | 1   | PIECE |       |
| A6         | 2 1/2" XHY-BLACK | 1   | PIECE |       |
| A7         | 3" XHY-BLACK     | 1   | PIECE |       |
| A8         | 4" XHY-BLACK     | 1   | PIECE |       |
| A9         | 5" XHY-BLACK     | 1   | PIECE |       |
| A10        | 6" XHY-BLACK     | 1   | PIECE |       |
| A11        | 8" XHY-BLACK     | 1   | PIECE |       |
| A12        | 10" XHY-BLACK    | 1   | PIECE |       |
| A13        | 12" XHY-BLACK    | 1   | PIECE |       |
| A14        | 14" XHY-BLACK    | 1   | PIECE |       |
| A15        | 16" XHY-BLACK    | 1   | PIECE |       |
| A16        | 18" XHY-BLACK    | 1   | PIECE |       |
| A17        | 20" XHY-BLACK    | 1   | PIECE |       |
| A18        | 24" XHY-BLACK    | 1   | PIECE |       |
| A19        | 30" XHY-BLACK    | 1   | PIECE |       |
| A20        | 36" XHY-BLACK    | 1   | PIECE |       |
| A21        | 42" XHY-BLACK    | 1   | PIECE |       |
| A22        | 48" XHY-BLACK    | 1   | PIECE |       |
| A23        | 54" XHY-BLACK    | 1   | PIECE |       |
| A24        | 60" XHY-BLACK    | 1   | PIECE |       |
| A25        | 66" XHY-BLACK    | 1   | PIECE |       |
| A26        | 72" XHY-BLACK    | 1   | PIECE |       |
| A27        | 78" XHY-BLACK    | 1   | PIECE |       |
| A28        | 84" XHY-BLACK    | 1   | PIECE |       |
| A29        | 90" XHY-BLACK    | 1   | PIECE |       |
| A30        | 96" XHY-BLACK    | 1   | PIECE |       |
| A31        | 102" XHY-BLACK   | 1   | PIECE |       |
| A32        | 108" XHY-BLACK   | 1   | PIECE |       |
| A33        | 114" XHY-BLACK   | 1   | PIECE |       |
| A34        | 120" XHY-BLACK   | 1   | PIECE |       |
| A35        | 126" XHY-BLACK   | 1   | PIECE |       |
| A36        | 132" XHY-BLACK   | 1   | PIECE |       |
| A37        | 138" XHY-BLACK   | 1   | PIECE |       |
| A38        | 144" XHY-BLACK   | 1   | PIECE |       |
| A39        | 150" XHY-BLACK   | 1   | PIECE |       |
| A40        | 156" XHY-BLACK   | 1   | PIECE |       |
| A41        | 162" XHY-BLACK   | 1   | PIECE |       |
| A42        | 168" XHY-BLACK   | 1   | PIECE |       |
| A43        | 174" XHY-BLACK   | 1   | PIECE |       |
| A44        | 180" XHY-BLACK   | 1   | PIECE |       |
| A45        | 186" XHY-BLACK   | 1   | PIECE |       |
| A46        | 192" XHY-BLACK   | 1   | PIECE |       |
| A47        | 198" XHY-BLACK   | 1   | PIECE |       |
| A48        | 204" XHY-BLACK   | 1   | PIECE |       |
| A49        | 210" XHY-BLACK   | 1   | PIECE |       |
| A50        | 216" XHY-BLACK   | 1   | PIECE |       |
| A51        | 222" XHY-BLACK   | 1   | PIECE |       |
| A52        | 228" XHY-BLACK   | 1   | PIECE |       |
| A53        | 234" XHY-BLACK   | 1   | PIECE |       |
| A54        | 240" XHY-BLACK   | 1   | PIECE |       |
| A55        | 246" XHY-BLACK   | 1   | PIECE |       |
| A56        | 252" XHY-BLACK   | 1   | PIECE |       |
| A57        | 258" XHY-BLACK   | 1   | PIECE |       |
| A58        | 264" XHY-BLACK   | 1   | PIECE |       |
| A59        | 270" XHY-BLACK   | 1   | PIECE |       |
| A60        | 276" XHY-BLACK   | 1   | PIECE |       |
| A61        | 282" XHY-BLACK   | 1   | PIECE |       |
| A62        | 288" XHY-BLACK   | 1   | PIECE |       |
| A63        | 294" XHY-BLACK   | 1   | PIECE |       |
| A64        | 300" XHY-BLACK   | 1   | PIECE |       |
| A65        | 306" XHY-BLACK   | 1   | PIECE |       |
| A66        | 312" XHY-BLACK   | 1   | PIECE |       |
| A67        | 318" XHY-BLACK   | 1   | PIECE |       |
| A68        | 324" XHY-BLACK   | 1   | PIECE |       |
| A69        | 330" XHY-BLACK   | 1   | PIECE |       |
| A70        | 336" XHY-BLACK   | 1   | PIECE |       |
| A71        | 342" XHY-BLACK   | 1   | PIECE |       |
| A72        | 348" XHY-BLACK   | 1   | PIECE |       |
| A73        | 354" XHY-BLACK   | 1   | PIECE |       |
| A74        | 360" XHY-BLACK   | 1   | PIECE |       |
| A75        | 366" XHY-BLACK   | 1   | PIECE |       |
| A76        | 372" XHY-BLACK   | 1   | PIECE |       |
| A77        | 378" XHY-BLACK   | 1   | PIECE |       |
| A78        | 384" XHY-BLACK   | 1   | PIECE |       |
| A79        | 390" XHY-BLACK   | 1   | PIECE |       |
| A80        | 396" XHY-BLACK   | 1   | PIECE |       |
| A81        | 402" XHY-BLACK   | 1   | PIECE |       |
| A82        | 408" XHY-BLACK   | 1   | PIECE |       |
| A83        | 414" XHY-BLACK   | 1   | PIECE |       |
| A84        | 420" XHY-BLACK   | 1   | PIECE |       |
| A85        | 426" XHY-BLACK   | 1   | PIECE |       |
| A86        | 432" XHY-BLACK   | 1   | PIECE |       |
| A87        | 438" XHY-BLACK   | 1   | PIECE |       |
| A88        | 444" XHY-BLACK   | 1   | PIECE |       |
| A89        | 450" XHY-BLACK   | 1   | PIECE |       |
| A90        | 456" XHY-BLACK   | 1   | PIECE |       |
| A91        | 462" XHY-BLACK   | 1   | PIECE |       |
| A92        | 468" XHY-BLACK   | 1   | PIECE |       |
| A93        | 474" XHY-BLACK   | 1   | PIECE |       |
| A94        | 480" XHY-BLACK   | 1   | PIECE |       |
| A95        | 486" XHY-BLACK   | 1   | PIECE |       |
| A96        | 492" XHY-BLACK   | 1   | PIECE |       |
| A97        | 498" XHY-BLACK   | 1   | PIECE |       |
| A98        | 504" XHY-BLACK   | 1   | PIECE |       |
| A99        | 510" XHY-BLACK   | 1   | PIECE |       |
| A100       | 516" XHY-BLACK   | 1   | PIECE |       |



**REVISION**

| NO. | DATE | DESCRIPTION | APP'D. |
|-----|------|-------------|--------|
|     |      |             |        |

This drawing is the exclusive property of Service Marine Industries, Inc. and is furnished on a confidential basis. No portion of this drawing may be copied, traced, photographed, or in any other way reproduced; nor may any item hereon depicted be manufactured as shown without the written consent of Service Marine Industries, Inc. The recipient of the information contained hereon may not disclose the same to any other person or business firm; nor may he use such information except for the specific purpose intended.

189' X 40' X 12'-9"  
DINNER / EXHIBITION VESSEL  
BILGE AND FIRE SYSTEM

SCALE: NOTED DATE: August 14, 1991  
DRAWN: R. M. B. APP'D.  
HULL NO. 1033 DWG. NO. Page 1 of 1

