

SPIRIT OF NORFOLK Pre and Post Fire Photos



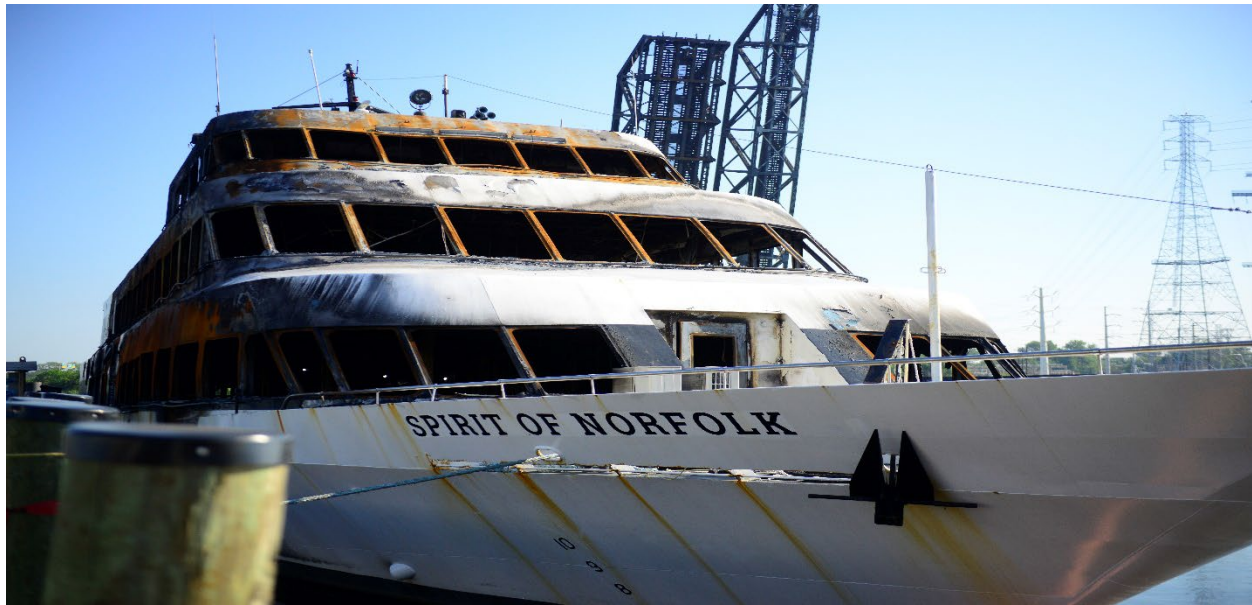
Source: Hornblower City Cruises.



Source: USCG.

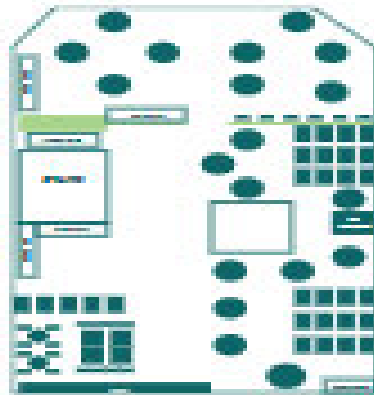


Source: Castlerock Risk Survey, June 6, 2022



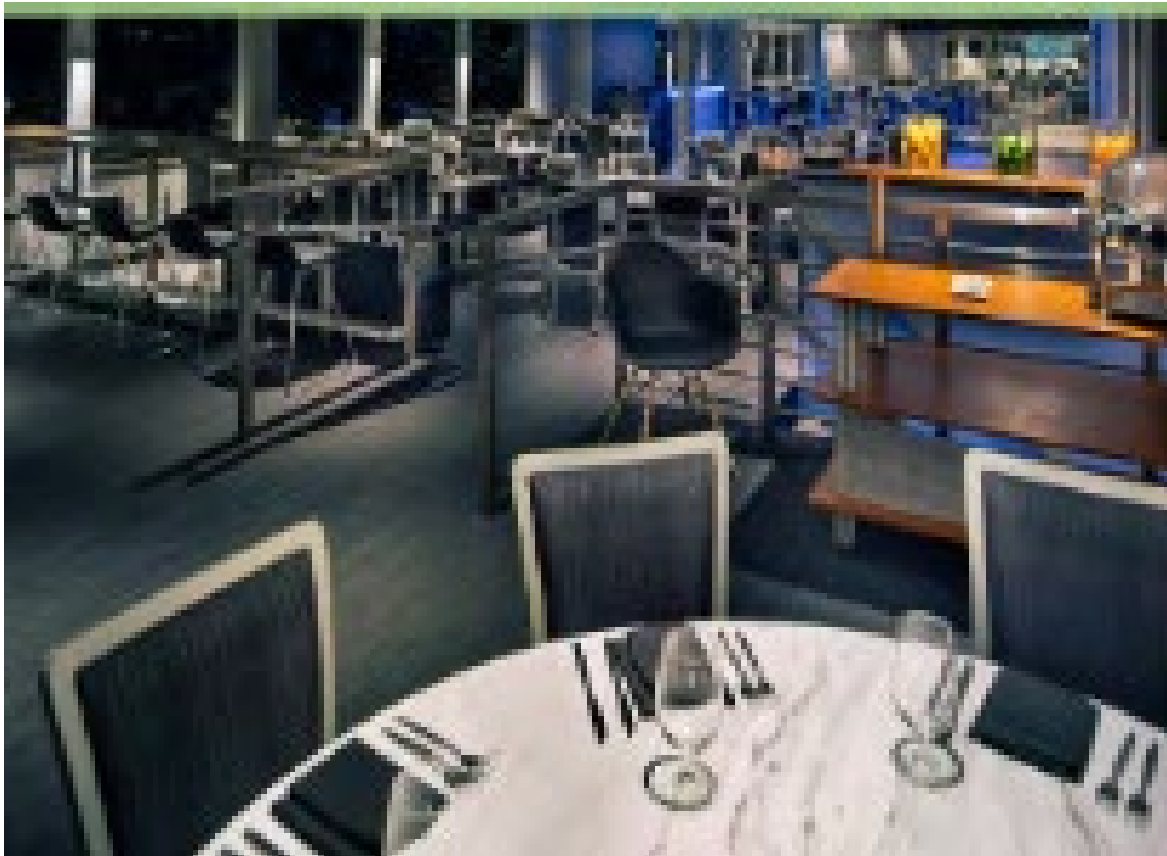
Source: USCG.

Riverview Deck



**RIVERVIEW
DECK**
First Level Deck
Seating Capacity | 206
Bar | 1
Restrooms | 2
Dance Floor | 1
Lounge

Source: Hornblower City Cruises



Riverview Deck Facing Aft. Source: Hornblower City Cruises



Riverview Deck Facing Forward. Source: USCG



Riverview deck facing forward. Source: USCG

Harborview Deck



HARBORVIEW DECK

Second Level Deck

Seating Capacity | 166

Bar | 1

Restrooms | 2

Dance Floor | 1

Harborview layout. Source: Hornblower City Cruises



Harborview Deck. Source: Hornblower City Cruises



Harborview Deck. Source: Castlerock Risk Survey, June 6, 2022



Harborview Deck. Source: USCG.



Harborview Deck. Source: USCG.

Skyline Deck



Image courtesy of Hornblower City Cruises.



Skyline deck. Source: Castlerock Risk Survey, June 6, 2022



Source: USCG.



Bar Area Skyline Deck. Source: USCG.

Galley Area



Source: Castlerock Risk Survey, June 6, 2022



Source: ATF

Hydraulic Area Engine Room



Source: Castlerock Risk Survey, June 6, 2022



Source: USCG.

Starboard Engine



Source: Castlerock Risk Survey, June 6, 2022.



Source: NTSB.

Port Engine



Source: Castlerock risk Survey, June 6, 2022



Source: NTSB