



*A Guide for Service Members and their Families*

**Fleet & Family Support Center NAS  
Pensacola**



**Welcome to Paradise!!!!!!**

The Emerald Coast has miles of sugar white sand beaches, southern hospitality and charm, plenty of outdoor activities, and friendly people.

NAS Pensacola, the Cradle of Naval Aviation, is located in extreme Northwest Florida, Escambia County, FL (there is also an Escambia County, AL); 65 minutes east of Mobile, AL, 45 minutes west of Ft. Walton Beach, FL, and 500 miles NW of Orlando, FL.

If you are coming to NAS Pensacola as a Navy student, typically you are not authorized (read your orders to ensure the account code supports movement of family members) to bring your family members with you. If you choose to do so, without authorization, the cost of the move to Pensacola will be out of pocket and the strong possibility exists you will have to pay for the majority, if not all, of the move to your next duty station at your own expense.

### **Getting to Pensacola**

#### **Arriving by Automobile**

#### **Driving Directions**

To get to NAS Pensacola from Interstate I-10:

Westbound on I-10, exit at Exit 2. Turn right (south) onto SR-297 (Pine Forest Road), at approximately 3.5 miles turn right at the intersection of SR-297 (Pine Forest Rd) and Longleaf Drive onto Longleaf Drive. Follow Longleaf Drive to SR-173 (Blue Angel Parkway). Follow SR-173 Southbound to the Back Gate of NAS Pensacola.

Eastbound on I-10, exit at Exit 2. Turn left (south) onto SR-297 (Pine Forest Road), at approximately 3.5 miles turn right at the intersection of SR-297 (Pine Forest Road) and Longleaf Drive onto Longleaf Drive. Follow Longleaf Drive to SR-173 (Blue Angel Parkway). Follow SR-173 Southbound to the Back Gate of NAS Pensacola.

To NAS Pensacola Region from Pensacola Regional Airport:

When leaving the airport, stay to the left (follow the signs directing you to the Beaches and Downtown). At the intersection of Airport Blvd. and 12th Ave., turn Left onto 12th Ave. Stay on 12th Ave until you reach a sign that reads "12th Ave Next Left", stay to the right into Fairfield Dr. Stay on Fairfield Dr. and look for a large sign that reads "295 South Pensacola NAS". Merge to the Left which will put you on New Warrington Rd. Stay on New Warrington Rd which turns into Navy Blvd. Navy Blvd takes you to the Front Gate of NAS Pensacola Region.

To Corry Station (Center for Information Dominance) from Pensacola Airport:

Follow the above directions to NAS Pensacola from Pensacola Airport until you reach "Chiefs Way" (look for the sign after you pass the Jackson Street and New Warrington Rd Intersection). Turn Right and follow Chiefs Way to the Front Gate of Corry Station.

### **Arriving by Plane:**

Pensacola International Airport is located in the Northeast side of Pensacola, approximately 13 miles (25 to 30 minutes) from NAS Pensacola. Conveniently located near Cordova Mall and Pensacola State College Main Campus.

USO Center at the Pensacola International Airport:  
Suite 216  
850-455-8280 Option 1

USO Pensacola International Airport is committed to lifting the spirits of America's troops and their families within the Northwest Florida panhandle. Our center includes a movie area (DVD, Blu-Ray, cable); a game area (XBox 360, Wii), a kitchen (snacks and drinks), a library area (books, Wi-Fi) and computer area (computers, laptops) or we can simply be a place to rest between flights. With a host of dedicated volunteers in the center and at the information booth, the USO located at Pensacola International Airport is a must-stop while traveling through Pensacola. Open seven days a week.

### **Getting Around Pensacola**

Florida Department of Motor Vehicles (DMV) Web site is the best source for all of your vehicle related questions. Visit <http://www.flhsmv.gov> for Florida driver's license requirements and local vehicle requirements such as insurance requirements.

#### **Public Transportation**

Mass transportation for Pensacola (Escambia County) is ECAT (Escambia County Area Transit). There are no trains, trolleys, or ferries available. For bus schedules/fares call 850-595-3228 or <http://www.flhsmv.gov/>.

#### **Flight Delay Info:**

<http://www.fly.faa.gov/flyfaa/usmap.jsp>

#### **Florida DMV:**

<http://www.flhsmv.gov>

#### **ECAT (Public Transportation):**

<http://www.flhsmv.gov>

#### **National Traffic and Road Closure Info:**

<http://www.fhwa.dot.gov/trafficinfo/index.htm>

#### **Gas Prices for US Cities:**

<http://www.fhwa.dot.gov/trafficinfo/index.htm>

#### **Florida Road Conditions**

<http://www.fl511.com/>

#### Florida Traffic Laws:

- By law, everyone in a vehicle must wear a seatbelt. See DMV Web site for requirements regarding child safety seats.
- It is against the law to write, send, or read text-based communications on an electronic device (i.e., cell) while driving on Florida Highways.
- Strict drinking and driving laws exist.
- Headlights required at dusk/dawn, during fog/rain, of course nighttime

### Lodging

Plan in advance to ensure you, your family and your pets have adequate accommodations. It is important to reserve your lodging in advance to ensure you have a place to stay when you get here. Obtaining a room/lodging in Pensacola during the summer and holiday season at the last minute might be difficult. Early reservations will ensure you have accommodations while you search for living quarters.

Navy Gateway Inn & Suite (NGIS): The Pensacola NGIS consists of five buildings with 693 single transient rooms, 180 suites, DVD/VCR, microwaves, standard hotel amenities, irons, ironing boards, coffee pots, telephones, and various additional items. Other facilities available within the complex are vending rooms, laundry, picnic tables, outdoor grills, volleyball court, and a large conference facility adjacent to the lodging facilities.

Navy Lodge Pensacola: is conveniently located to family resources such as: Navy Exchange, Commissary, Community Center, Swimming Pool, Golf Course, Tennis Courts, Childcare Center, Movie Theater, MWR Recreation Center, Barrancas Beach, Marina, Hospital, Enterprise Car Rental, Navy Federal, and Pen Air Credit Union.

Just walk out our guest rooms onto the crystal white sands of beautiful Pensacola Bay. We offer daily complimentary breakfast and free Wi-Fi service.

Navy Lodge Pensacola is approximately 13 miles from Pensacola International Airport (PNS). Taxi services are always available.

There are some pet friendly rooms available. Certain restrictions on type and size apply. Call for information and fee.

Community Hotels: There are hotels in the Pensacola area that welcome pets, some may require a non-refundable deposit at check-in.

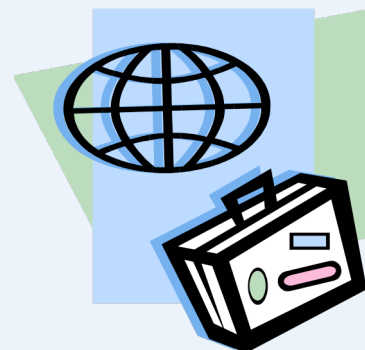
**Navy Gateway Inns & Suites  
NAS Pensacola**  
NGIS Reservations  
<http://ngis.dodlodging.net>  
1-877-628-9233

#### **Navy Lodge Pensacola (Pet Friendly)**

Naval Air Station  
Bldg 3875  
Radford Boulevard  
Pensacola, FL 32508  
850-456-8676  
Em:  
[navylodge.pensacola@nexweb.org](mailto:navylodge.pensacola@nexweb.org)  
Reservations:  
[www.dodlodging.com](http://www.dodlodging.com)  
or  
[https://www.navy-lodge.com/lodge\\_page.html?p\\_lodge\\_number=17](https://www.navy-lodge.com/lodge_page.html?p_lodge_number=17)

**Pet Friendly Civilian Lodging**  
[www.Petswelcome.com](http://www.Petswelcome.com)  
[www.Officialpethotels.com](http://www.Officialpethotels.com)

**NOTE:** The DON, nor FFSC, does **not** endorse these web sites – they are for informational purposes only.



## Housing

### **Balfour Beatty Family Housing**

Balfour Beatty manages all military housing areas in Pensacola & Milton (Escambia County/Santa Rosa County) Florida. For a complete list of housing properties and additional information visit <http://www.naspensacolahomes.com/>. For current Basic Allowance for Housing (BAH) visit <http://www.defensetravel.dod.mil/site/bahCalc.cfm>, the zip code is 32508.

### **Housing Welcome Center**

The Housing Welcome Center on-board NAS Pensacola offers a full range of housing services and support to all service members of all branches of the service of , to include, but not limited to, a volunteer realtor to assist with off-base housing, off-base rental listing, Rental Partnership Program, Geographical Bachelor Quarters and bachelor/bachelorette quarters assignment. For assistance or additional information call 850-452-5168. Make sure you acquire Renter's Insurance and Flood Insurance, that covers your household goods from rising water, whether you live in Government Quarters or a Community residence.

### **Utilities**

To set up TV, internet, phone, electricity, natural gas, and more in your new home visit <http://www.ci.pensacola.fl.us/624/Establish-Utility-Service> within the Pensacola City limits and <http://myescambia.com/business/utilities> within Escambia County limits. Remember to ask about a military wavier when hooking up your utilities – not everyone participates.

### **Personal Property Office/PPO (TMO)**

Upon arrival to NAS Pensacola contact the PPO to coordinate delivery of your Household Goods (HHG). If you are not in permanent housing, and the government moved your HHG, the government will store your HHG for free for up to 90 days – this does not apply to a Personally Procured Move/PPM (formally known as a DITY). Visit the Navy Legal Office for information on renter's rights and Service Member's Relief Act (SCRA).

### **Loan Locker**

Loan Locker items available at NAS Pensacola Fleet and Family Support Center are Kitchen items only – we do not have furniture. 850-452-2633/2155 for additional information.



*Before you Sign  
That Lease: We  
recommend you  
take contracts or  
leases to the  
Housing Office or  
Navy Legal Services  
Office for FREE  
review. Do NOT  
enter into any lease  
agreement until  
you physically walk  
through the rental.*

Call



**FFSC Programs and Services**  
**850-452-5990 ext. 0**

Information & Referral  
Relocation Assistance  
Life Skills Education  
Family Employment Assistance  
Sexual Assault Prevention & Response (SAPR)  
SAPR Victim Advocacy Program  
Domestic Abuse Victim Advocate Assistance  
Ombudsman Support  
Counseling Services  
Child Counseling  
Individual Augmentee Support (IA)  
Deployment Readiness & Support  
Transition Assistance Program  
Personal Financial Mgt Assistance  
Exceptional Family Member Assistance  
Family Readiness Group Support  
Emergency Preparedness  
NFAAS

**Traveling Inbound from Overseas Locations**

Cargo shipments may take up to two months to arrive – we do not have loan furniture. Plan your HHG shipments accordingly.



**Fleet and Family Support Center**

**COM: 850-452-5990 ext. 0**

**DSN: 459-5990 ext. 0**

**Toll Free: 1-877-471-7240**

Join us on Facebook: [www.facebook.com/pages/Fleet-and-Family-Support-Center-Naval-Air-Station-Pensacola/10150095615740541](http://www.facebook.com/pages/Fleet-and-Family-Support-Center-Naval-Air-Station-Pensacola/10150095615740541)

The Fleet and Family Support Center (FFSC) offers a variety of services and programs to support the military lifestyle to all Service Members, Active Duty, Activated Reserves&

Guardsman, Retirees, and their families They include:

**Information and Referral (I&R)**

**850-452-2155 or 850-452-2633 or 850-452-5990 ext. 0**

The I&R program - what is offered by the FFSC, Navy and local community about how to access the information and services they want or need. Typically, in response to a direct request, I&R offers basic information such as organization names, telephone numbers, addresses, and/or physical accessibility. Some of the information available relates to local military and civilian community services such as education, life-enrichment, and therapeutic services. Loan Lockers for incoming or outgoing personnel.

**Navy Family Ombudsman Program**

Ombudsmen are volunteers married to a member of the command. They provide a communication link between the Commanding Officer and family members. Trained as Information and Referral I&R specialists, they provide information to families regarding, but not limited to, command/Navy policies, deployment schedules and assistance to spouses when the Servicemembers is deployed. All Navy commands, including shore activities, usually have an Ombudsman assigned. For your Command Ombudsman Information call your command, or 850-452-9022 or 850-452-4277.

**Family Employment Readiness Program (FERP)**

**850-452-8453**

Most Navy spouses work. It can be challenging to maintain a career while transferring to new duty stations with your Sailor or being stationed overseas and in remote areas. The goal of the Family Employment Readiness Program is to help you learn how to get a job and maintain a career as a military

family member. A variety of services are available to family members looking for employment through the Fleet and Family Support Center.

**New Parent Support (NPSP)**  
**850-452-5665/5673**

This is a voluntary early intervention program for new parents. The key component is home visitation. It is designed to promote healthy family functioning, child development, and positive parent-child interactions.

**Relocation Assistance Program (RAP)**  
**850-452-4277 or 850-452-5609**

Whether you are transferring overseas or to a CONUS command, this program is designed to help you prepare through a range of services. Learn how to deal with movers, information about personal property entitlements, travel pay & allowances, creating a budget for the move, plan your overseas move, learn about cultural adjustments, learn details about your new command, housing availability, cost of living, child care, recreational opportunities, & one-on-one assistance.

**Transition Assistance Program (TAP) GPS Program**  
**850-452-5618 or 850-452-5620**

Transition GPS is a redesigned transition assistance program that ensures Servicemembers and their family members are substantially better prepared for civilian life. The program provides extensive tools, education and support needed for a successful transition from military service to civilian community. Participants will depart the military very “career ready” & with strategies that augment the job search process in today’s market. In the Transition GPS program, Servicemembers and family members will assess what interests them the most in the workplace and learn how to increase their marketability, so they may obtain a job they want.

**Personal Financial Management (PFM) Planning**  
**850-452-5102/2631**

The Center provides financial education, training & counseling that emphasize long-term financial responsibility through instruction on sound money management, debt management, saving, investing and retirement planning. Learn about budgeting, home buying, checkbook management, setting up a budget, car buying, & other financial issues.

**Family Advocacy Program (FAP)**  
**850-452-5114**

This program is designed to address the prevention, identification, reporting, intervention, treatment, and follow-up of child and spouse maltreatment. There are five primary goals: 1) prevention of family violence, 2) victim safety and protection, 3) offender accountability, 4) rehabilitative education and counseling, 5) community accountability/responsibility for a consistent, appropriate response.

**IA Deployment Support/Deployment Readiness**  
**850-452-4277**

Designed to help Servicemembers and their families successfully manage the challenges of deployment (separation) by helping them to prepare and better anticipate and understand the physical and emotional

demands associated with deployment. For new military personnel, IAs, and family members call the above number to find out what is needed to be deployment ready – don't deploy and leave your loved ones without. Services are offered prior to deployment, during deployment and post deployment.

**Sexual Assault Victim Prevention & Response (SAPR)**  
**850-452-9017/5328/5109**

When traumatic situations arise, the Center can provide the support & resources necessary for recovery & rebuilding...

**Emergency Preparedness/NFAAS/ADPASS/AFPASS**  
**850-452-4277**

How to prepare for emergencies, whether it is a natural disaster or man-made disaster. When do you evacuate, what do you take, how do I protect what is mine, my family and my pets – how do I prepare for when Mother Nature throws her worst? The Center offers workshops throughout the year on Emergency Preparedness. What is NFAAS/AFPASS/ADPASS? How do I use it? When do I use it? How do I register?

NAS Pensacola FFSC also offer a wide variety of counseling, classes and assistance in areas not listed above as well as Information and Referral services. NAS Pensacola FFSC can provide a list of classes, and workshops that are currently offered.





## Youth/Kids Sponsorship

YOUTH SPONSORSHIP: If your child would like to correspond with a child in Pensacola prior to arrival, contact the Child and Youth Programs, Youth Center. [y.center@mchsi.com](mailto:y.center@mchsi.com), 850-452-2417 or contact the School Liaison Officer at [PensacolaSLO@navy.mil](mailto:PensacolaSLO@navy.mil), 850-714-4105. Current events can be found on the MWR facebook site:

<https://www.facebook.com/mwrpensacola>

### School Liaison Officer

NAS Pensacola  
4119 Children's Lane  
Pensacola FL 32511  
Cell: 850-712-4105  
Office: 850-458-6588

At NAS Pensacola, we make available a "Youth Welcome Aboard Resource Guide" to our incoming youth. We want to provide useful information and materials on programs and services that are available just for the youth. Please visit <http://militarykidsconnect.dcoe.mil/>. The Military Kids Connect website uses innovative ways to help military youth cope with the unique strains of military life.

Student 2 Student (S2S) or Junior Student 2 Student (JS2S): are school based programs designed to aid youth who are changing schools due to their parent's military mission requirements. These programs are school managed and student led. Currently, S2S is offered at Escambia High and JS2S is offered at Bailey Middle.

## Schools

The school district provides choice to incoming, military families. They can choose to attend any non-over-capacity school in the district. The parents provide own transportation. School options in Pensacola include public schools in Escambia County School District, <http://www.escambiaschools.net>.

### REGISTRATION (Items needed)

1. **CERTIFICATE OF IMMUNIZATION** A certificate issued by a local pediatrician or the Escambia County Health Department. The child's current immunization information can be transferred onto this required form at the Naval Hospital in Pensacola (850-505-6601). Take the child's "shot record" to be verified and for issuance of the certificate.

Florida law requires students to have these immunizations: diphtheria, pertussis, and tetanus (DPT series), five doses; poliomyelitis (shot or oral), four doses; measles, mumps and rubella (MMR), two doses.

2. **BIRTH CERTIFICATE** A birth certificate or another legally acceptable proof of age document must be recorded at the school. Your child's birth certificate will be returned to you.

3. **STUDENT PHYSICAL EXAMINATION** State law requires that any child entering a Florida school for the first time must have a physical examination before school begins. This form must be completed by a licensed physician.

4. **PROOF OF RESIDENCE**-Families that live on base must provide documentation!

5. **CHILD'S SOCIAL SECURITY NUMBER**

## Emergency Contact Numbers

### Community Numbers

American Red Cross.....850-432-7601

Domestic Violence.....850-434-1177

Rape Crisis Hotline.....850-433-7273

Suicide Hotline.....1-800-273-8255

Fire.....911

Police.....911

Emergency Medical Services  
Ambulance.....911

Escambia County Sheriff  
Office..... 850- 436-9630

Pensacola Police Dept..... 850- 435-1900

Escambia County Emergency  
Management Office.....850-471-6400

Baptist Hospital.....850-434-4011

Sacred Heart Hospital.....850-416-7000

West Florida Hospital.....850-494-4000

Gulf Breeze Hospital.....850-934-2000

Veterinary Emergency Ctr..... 850-477-3914

Poison Control Ctr.....1-800-222-1222

### On-Base Numbers

Chaplain..... 850-452-4785

CACO..... 850-554-8191

Sexual Assault Response  
Coordinator .....850-452-5109/9017

Sexual Assault Victim  
Advocate..... 850-554-5606

Fleet and Family Support  
Center...850-452-5990 x 0

Fire (Emergency)..... 911

Police/Security (Emergency)..... 911

Family Advocacy.....850-452-5990

Victim Advocate.....850-452-

Navy Marine Corps Relief  
Society.....850-452-2300

Emergency Disaster Assistance..... 850-  
452-4277/5990 x. 0

Emergency Family Assistance Center (EFAC)  
....850-452-5990 x.0

NASP Emergency Mgt Office (EMO).....850-452-  
4481

Naval Hospital (Emer Care).....850-505-6601

NASP Quarter Deck.....850-452-4785/86

## Establish Utility Service

### **City Of Pensacola (within city limits)**

#### **Electricity**

##### **Gulf Power**

<http://www.gulfpower.com/>  
1-800-225-5797

#### **Natural Gas**

##### **Pensacola Energy**

<http://pensacolaenergy.com>  
(850) 435-1800

#### **Garbage/Recycling**

##### **City of Pensacola**

(850) 435-1800

#### **Water/Sewer**

##### **Emerald Coast Utilities Authority**

<http://www.ecua.fl.gov/>  
(850) 476-0480

#### **Phone/Internet/Cable TV**

##### **Cox Communications**

<http://ww2.cox.com/residential/gulfcost/home.cox>  
850-478-0200

#### **AT&T/U-Verse**

<http://www.att.com/>  
1-800-288-2020

Check AT&T service availability:

<http://www.attinternetservice.com/bundles>

### **Escambia County, FL**

#### **Electricity**

##### **Gulf Power**

<http://www.gulfpower.com/>  
1-800-225-5797

#### **Water/Sewer/Garbage/Trash/Re-cycle**

##### **Emerald Coast Utilities Authority (ECUA)**

<http://www.ecua.fl.gov/>  
<http://www.ecua.fl.gov/business/residential-customers> (new accounts)  
(850) 476-0480

#### **Water**

##### **People's Water Service**

<http://www.peopleswaterservice.com/pages/home?location=pensacola>  
850-455-8552

#### **Natural Gas**

<http://pensacolaenergy.com/opening-account/connecting-services>  
850-435-1800

#### **Phone/Internet/Cable TV**

##### **Cox Communications**

<http://ww2.cox.com/residential/gulfcost/home.cox>  
850-478-0200

#### **AT&T/U-Verse**

<http://www.att.com/>  
1-800-288-2020

Check AT&T service availability:

<http://www.attinternetservice.com/bundles>

## Ombudsman/LINKS

NAS Pensacola:

[naspombudsman@gmail.com](mailto:naspombudsman@gmail.com)

Naval Education and Training  
Command (NETC):

[netcombudsman@gmail.com](mailto:netcombudsman@gmail.com)

Information Warfare Training  
Command (CIWT):

[ciwt.ombudsman@gmail.com](mailto:ciwt.ombudsman@gmail.com)

Information Warfare Training  
Command (IWTC):

[corry.ombudsman@gmail.com](mailto:corry.ombudsman@gmail.com)

Naval Aviation Schools Command  
(NASC):

[ombudsman.nasc@gmail.com](mailto:ombudsman.nasc@gmail.com)

Center for Naval Aviation Technical  
Training (CNATT):

[cnatt.ombudsman@yahoo.com](mailto:cnatt.ombudsman@yahoo.com)

CNATT Eglin:

[cnattdeteglin.ombudsman@gmail.com](mailto:cnattdeteglin.ombudsman@gmail.com)

Naval Air Technical Training  
Command (NATTC):

[nattcombudsman@gmail.com](mailto:nattcombudsman@gmail.com)

Naval Education & Training  
Professional Development &  
Technology Center (NETPDTC):

[netpdtcombudsman@yahoo.com](mailto:netpdtcombudsman@yahoo.com)

Naval Hospital Pensacola (NHP):

[nhpombudsman@yahoo.com](mailto:nhpombudsman@yahoo.com)

Branch Medical Clinic Panama City  
(BRMEDCLINIC):

[nbhcpc@gmail.com](mailto:nbhcpc@gmail.com)

Navy Medicine Operation Training  
Center (NMOTC):

[nmotc.ombudsman@yahoo.com](mailto:nmotc.ombudsman@yahoo.com)

Training Squadron 4 (VT-4):

[vt4.omb@gmail.com](mailto:vt4.omb@gmail.com)

Training Squadron 86 (VT-86):

[vt86ombudsman@gmail.com](mailto:vt86ombudsman@gmail.com)

Training Wing 10 (VT-10):

[vt10omb@yahoo.com](mailto:vt10omb@yahoo.com)

Navy Information Operation  
Command (NIOC):

[niocp.ombudsman@gmail.com](mailto:niocp.ombudsman@gmail.com)

Region Legal Service Office (RLSO):

[rlsoseombudsman@gmail.com](mailto:rlsoseombudsman@gmail.com)

Navy Operational Support Center  
Pensacola (NOSCP):

[nosc\\_pensacola\\_ombudsman@yahoo.com](mailto:nosc_pensacola_ombudsman@yahoo.com)

Blue Angels:

[bluesombudsman@yahoo.com](mailto:bluesombudsman@yahoo.com)

STRKFITRON ONE ZERO ONE (VFA-  
101):

[vfa101ombudsman@gmail.com](mailto:vfa101ombudsman@gmail.com)

NAVSCOLEOD EGLIN:

[navscoleodombudsman@yahoo.com](mailto:navscoleodombudsman@yahoo.com)

NAS Whiting Field (NASWF):

[naswfombudsman@gmail.com](mailto:naswfombudsman@gmail.com)

MATSG-21 & 23:

[Deborah.jenkins@usmc.mil](mailto:Deborah.jenkins@usmc.mil)



### **Pensacola Websites**

Visit us on Facebook – [www.facebook.com/pages/Fleet-and-Family-Support-Center-Naval-Air-Station-Pensacola](http://www.facebook.com/pages/Fleet-and-Family-Support-Center-Naval-Air-Station-Pensacola)

#### **Relocation Information and Services**

<http://www.militaryinstallations.dod.mil>

(Official DOD source for all US military installations CONUS & OCONUS)

<http://www.mybaseguide.com/navy/pensacola-nas/>

(NAS Pensacola Newcomer's Guide)

<https://www/cnic.navy.mil/Pensacola>

<http://www.move.mil/>

(Government Sponsored & PPM Household Goods Move)

<http://www.navy.mil/navydata/bases/navbases.html>

(USN CONUS Installations)

<http://www.navyadvancement.com/military->

[bases/navy-bases-overseas.php](http://www.navyadvancement.com/military-bases/navy-bases-overseas.php)

(USN OCONUS Installations)

<http://www.netc.navy.mil/centers/ciwt/IWTCcorrystation/>

(Information Warfare Training Command Corry Station)

<http://www.jbsa.af.mil/shared/media/document/AFD-120503-015.pdf>

(479<sup>th</sup> FTG NAS Pensacola)

<http://www.globalsecurity.org/military/facility/afb.htm>

(USAF Commands)

<https://www.trngcmd.usmc.mil/MATSG21/default.aspx>

(MATSG-21)

<http://www.marines.mil/Units.aspx>

(USMC Units)



<http://www.army.mil/info/organization/>  
(US Army Installations)

<http://www.defense.gov>

<http://www.commissaries.com/stores/html/store.cfm?dodaac=HQCSKC>  
(Commissary Pensacola)

<http://www.military.com>

<http://www.military.com/discounts>  
(Military Discounts)

<http://militarypay.defense.gov>  
(Military Compensation)

<https://www.whereismypov.com>

<http://www.militaryonesource.mil/>  
(Information on Military Installations)

<http://www.flhsmv.gov>  
(Florida Driver's License)

[http://www.magicyellow.com/category/Kennels\\_and\\_Pet\\_Boarding/Pensacola\\_FL.html](http://www.magicyellow.com/category/Kennels_and_Pet_Boarding/Pensacola_FL.html)  
(Community Kennels & Pet Boarding)

[http://www.magicyellow.com/category/Veterinarians/Pensacola\\_FL.html](http://www.magicyellow.com/category/Veterinarians/Pensacola_FL.html)  
(Community Veterinarians)

## **General**

Northwest Florida Festivals and Events Calendar  
<http://www.northwest-florida-travel.com/events-calendar.html>

Pensacola News Journal Calendar of Events  
<http://search.pnj.com/localevents>

Weekend events in Pensacola:  
<http://search.pnj.com/localevents/category//Products/200084-Weekender>

Saturday Mornings: Palafox Market... Local artists, local farmers market, and music Palafox  
Street Downtown Pensacola  
Saturday from 8AM- 2 PM  
<http://palafoxmarket.com/>

One Friday Night a Month: Gallery Night Downtown Pensacola Catch the local flair of art, music and much more. The 2015 schedule is: April 17<sup>th</sup>, May 22<sup>nd</sup>, June 19<sup>th</sup>, July 17<sup>th</sup>, August 21<sup>st</sup>, September 18<sup>th</sup>, October 16<sup>th</sup>, November 20<sup>th</sup> and December 18<sup>th</sup>  
<http://www.visitpensacola.com/articles/pensacola-gallery-night>

### **Pensacola Beach**

**Bands on the Beach** is at 7 p.m. and begins the first Tuesday in April and ends the last Tuesday in October.

The Escambia Amateur Astronomers' Association will offer **free star gazing** at the Gulfside Pavilion. **The Star Gazing dates** are: April 24 & 25, May 22 & 23, June 19 & 20, July 24 & 25, August 21 & 22, September 18 & 19 and October 16 & 17. Star Gazing will be held on a **Friday or Saturday** and will start at sunset at varying times throughout the summer based on daylight.  
<http://visitpensacolabeach.com>

Perdido Key Beach See the aquarium built by the people from the show “Tanked” on Animal Planet at the Visitors Center!  
<http://www.visitperdido.com/>

Maritime Park ...Is home of the Pensacola Blue Wahoos. Baseball season starts April 9<sup>th</sup>! There are plenty of free events such as drive in movies, concerts and many more...check it all out at: <http://pensacolacommunitymaritimepark.com/events/>

Ice Hockey Anyone? Pensacola is home to the Ice Flyers. Make sure to call ITT for tickets!!!!  
<http://www.pensacolaiceflyers.com/schedule.php>

Start Your Engines! Pensacola is the home of 5 Flags Speedway, Military discounts when you present your I.D. or check with ITT first for great deals.  
<http://www.5flagsspeedway.com/>

Run! Pensacola Runners Association  
<http://www.pensacolarunners.com/>

Want to Volunteer?  
<http://www.volunteermatch.org/search/orgs.jsp>

NASP Volunteer Coordinator Call 850-452-2034/4755

Imagination Station- Playgroup for kids  
<http://www.wsre.org/community/imagination-station/>

### **Children**

<http://naspensacola-mwr.com/child/child.htm>  
(NAS Pensacola & Corry Station Youth Facilities & Programs)

<http://naspensacola-mwr.com/child/LIAISON.htm>  
(NAS Pensacola & Corry Station School Liaison)

<http://www.pensacolahomeschool.org/home/>  
(Pensacola Homeschool)

<http://www.escambia.k12.fl.us/Master/intex.asp>  
(Escambia County Schools)

<http://www.santarosa.k12.fl.us/schools.html>  
(Santa Rosa County Schools)

<https://qol.persnet.navy.mil/CYPWeb>  
(US Navy Child Care/Child Development Centers)

<http://www.operationmilitarykids.org/public/home.aspx>

<http://www.militarykidz.com/index.html?>

<http://www.militarychild.org/>  
(Military Child Education Coalition)

<http://militarykidsblog.com/>

<http://apps.mhf.dod.mil/mymom>

<http://www.tutor.com/navy>

<http://www.kids4kids.biz/school-subjects.html>

<http://www.infoplease.com/homework/>

<http://www.4kids.org>

<http://www.forkidsonly.org/content.asp?c=cookbook>

## **Spouses**

<https://www.usajobs.gov/>

<http://www.careeronestop.org/militaryspouse>

<http://www.floridajobs.com>

<http://www.uso.org>

## **Medical**

<http://www.tricare.mil>

<http://www.humana-military.com>

<http://www.med.navy.mil/sites/pcola>  
(Navy Hospital/Clinics Pensacola)

<http://www2.va.gov/directory/guide/facility.asp?ID=5100&dnum=All>  
(Veterans Outpatient Clinic)

## **Pensacola**

<http://www.allyoucanread.com/pensacola-newspaper-fl/>  
(List of Pensacola FL Newspapers, Magazines, TV, Radio Stations and Local Information Sites)

<http://www.pnj.com>  
(newspaper)

<http://www.hellopensacola.com/>

<http://www.visitpensacola.com> (also contains calendar of major events)

<http://www.pensacola.com>

<http://www.flypensacola.com>  
(Pensacola Regional Airport)

<http://www.visitpensacolabeach.com>

<http://www.pensacola.com/pages/Community/newcomers.aspx>

<http://www.myfwc.com>  
(Florida Fish & Wildlife)

<http://www.pensacolachamber.com>  
(Pensacola Chamber of Commerce)

<http://www.srcchamber.com/>  
(Santa Rosa Cty Chamber of Commerce)

[http://national.citysearch.com/site\\_guide/pensacola-fl-metro](http://national.citysearch.com/site_guide/pensacola-fl-metro)

<http://www.goecat.com/routes/>

(Public Transportation – Community/Bus Routes)

<http://pensacolapolice.com/programs/crime-reports/>

(Crime Reports City Limits)

<http://spotcrime.com/fl/escambia+county>

(Crime Reports Escambia County FL)

## **Recreation**

<http://naspensacola-mwr.com/>

(MWR NAS Pensacola)

<http://www.mapmyride.com/us/pensacola-fl/>

(Bike Trails)

<http://www.visitpensacola.com/listings/9745/>

(Recreational Activities in Community)

## **Lodging/Housing**

<http://www.dodlodging.net>

(Navy Gateway Inn & Suites – also contains USAF)

<http://navy-lodge.com>

<http://www.usmc-mccs.org/lodging/index.cfm>

<https://www.housing.navy.mil>

(US Navy Housing)

<https://www.homes.mil>

(Official Site - designed to connect Service members and their Families with community housing rental listings located near U.S. military bases)

<http://www.homefair.com>

(Salary Reports/Crime Stats/School Reports/City Reports/etc.)

<http://pensacola.hotelguide.net/>

(Local Area Hotels)

<http://www.apartmentguide.com/apartments/Florida/Pensacola/>

<http://www.apartmentfinder.com/Florida/Pensacola>

<http://www.bedandbreakfast.com/pensacola.florida.html>

<http://www.Candlewood.Suites.com>

<http://www.extendedstayhotels.com>  
(Extended Stay)

[http://www.homegain.com/local\\_real\\_estate/FL/pensacola.html](http://www.homegain.com/local_real_estate/FL/pensacola.html)  
(Homes/Land/Condos/Estimates)

<http://www.pensacolarealestate.com/>  
(Homes/Land/Condos for sale)

<http://www.pensacolamls.com/>  
(Rentals)

### **Disaster/Emergency Preparedness**

<http://bereadyescambia.com>  
(Escambia County information for flood zones, evacuation maps/evacuation routes/how to prepare for disaster/shelters, etc.)

<http://www.msc.fema.gov>  
(flood zone maps/disaster info/etc.)

<https://www.ready.navy.mil/>  
(US Navy Disaster Preparedness)

<http://www.beready.af.mil/basicpreparedness/>  
(US Air Force Disaster Preparedness)

<http://www.acsim.army.mil/readyarmy/>  
(US Army Disaster Preparedness)



## **NAS Pensacola Gate hours**

NAS Pensacola Main Gate (located off of Navy Blvd and Duncan Road)  
Open Monday through Sunday, 24/7

**NAS Pensacola West Gate (located off of Blue Angel Hwy and Radford Blvd)**  
Open Monday through Friday 0500-1900  
Saturday, Sunday and Holidays 0800-1800

**Commercial Vehicle Inspection Lane (located at NAS Pensacola West Gate)**  
Open Monday through Friday 0730-1700  
Closed Saturday, Sunday and Holidays

CID Main Gate (located off of Chief's Way)  
Open Monday through Sunday, 24/7

**Corry Station Gate 7 (located off of Navy Exchange Road and Petty Officer Way)**  
Open Monday through Friday 0545-1700  
Closed Saturday, Sunday and Holidays

**Saufley Field Main Gate (located on Saufley Field Road)**  
Open Monday through Friday 24/7

### **NAS Pensacola Base Access**

All personnel requesting access to the installation must submit to background checks. Personnel will be vetted through Visitor Control Center(VCC), Building 777, located at NAS Pensacola Main Gate, use the left lane gain access to VCC. Personnel requiring a background investigation have to be clear of felony(ies) for more than 10 years. Personnel requesting access to the installation will need a valid driver's license, current registration and insurance.

Barrancas National Cemetery and A. C. Read Golf Course personnel visitors only use NAS Pensacola Main Gate located on Navy Blvd and Duncan Rd.

National Naval Aviation Museum, Naval Flight Academy, and Lighthouse visitors will only use NAS Pensacola West Gate located on Blue Angel Hwy and Radford Blvd. All personnel will need a valid driver's license and/or proper identification in order to gain access to the installation.

All commercial and vendor drivers requesting access to the installation to conduct business must submit a background check at the Commercial Vehicle Inspection (CVI) lane and must complete a vehicle inspection. Commercial and vendor vehicles are required to use the CVI lane located at NAS Pensacola West Gate on Blue Angel Hwy and Radford Blvd. Personnel requiring a background investigation have to be clear of felony(ies) for more than 10 years.

Media personnel will need pre-approval through NAS Pensacola Public Affairs Officer (PAO).

# MWR FACILITY MAP OF NASP

1. Family Picnic Center
2. A.C. Read Golf Course
3. MWR HRO Office-Moved to 15
4. Bayou Grande Marina
5. Indoor Pool
6. Library / CWRRA
7. Veterinarian Vet moved to Corry Aug 8, 2011
8. Car Wash
9. Portside Cinema & Fitness Center
10. Portside Gym
11. Portside Entertainment Complex
12. Youth Center
13. Child Care Center
14. Turner St. Pool
15. Radford Fitness Center & Gym / MWR Admin
16. Mustin Beach Officers' Club & Pool
17. Cubi Bar Café
18. Barrancas Beach
19. Barrancas Ballfields
20. Lighthouse Point - CPO Club & Blood Stripe Club
21. Oak Grove Park
22. Sherman Cove Marina
23. Recycling (Bios)
24. Starbucks



This map cannot be used for legal purposes, especially for determination of public access adjacent to sale or transfer of real estate where official government plat maps must be used to verify any traffic way shown on this map. MAPCON Publishing, Inc. assumes no responsibility in cases of misrepresentation by others of map data not confirmed by actual surveys.

**MARCOA Publishing Inc.**  
PO Box 53400  
San Diego, California 92151  
(619) 594-9900 [www.marcoapub.com](http://www.marcoapub.com)



*Golf Course*

**FORT**

**FORT  
BARRANCAS**

*Deer*

a Ban

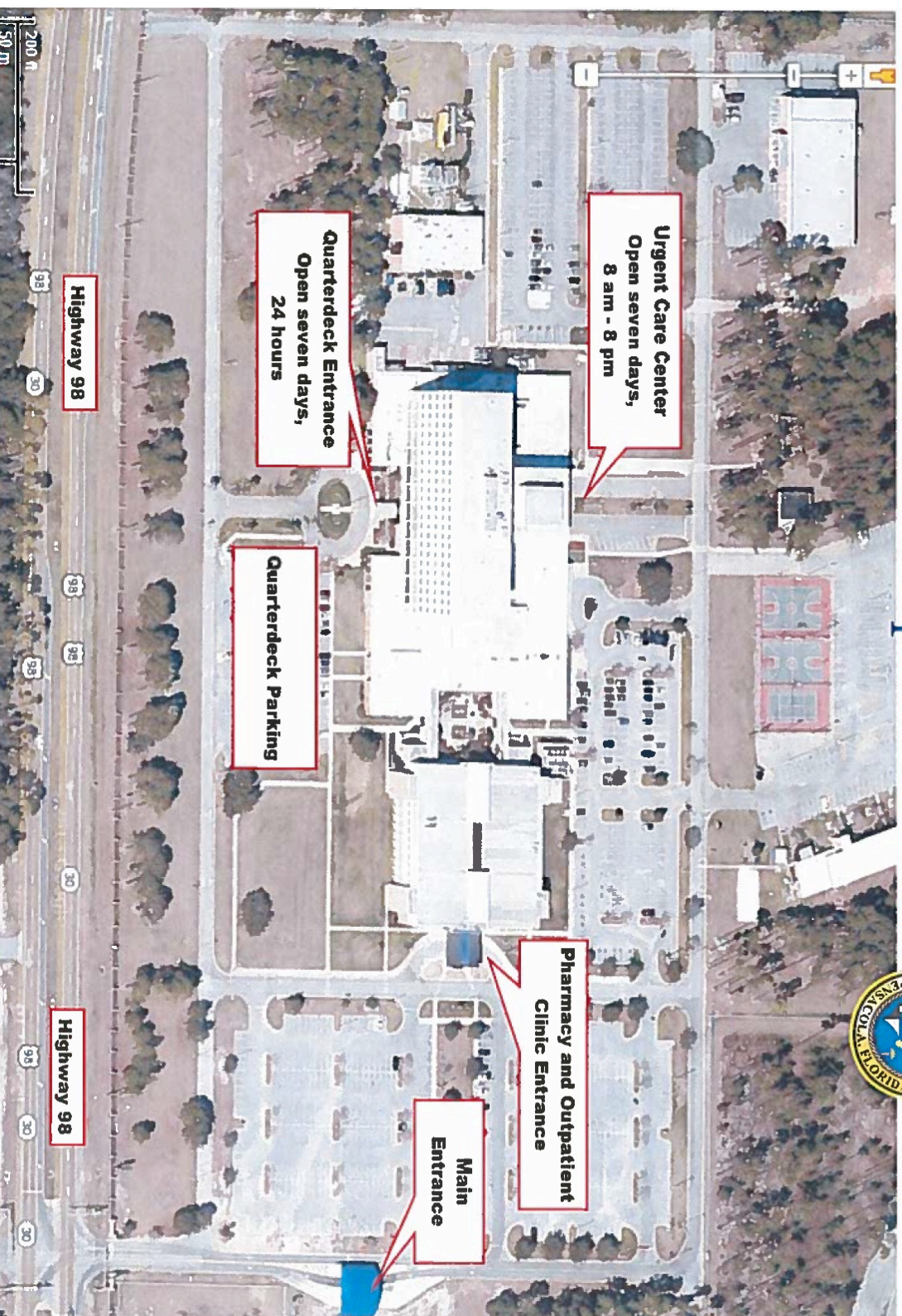
Basin

**MARCOA**  
© 2001  
**MARCOA Publishing Inc.**  
PO Box 538100  
San Diego, California 92153  
(619) 592-5600 / [www.marcoapub.com](http://www.marcoapub.com)

[illegible]



# NHP Naval Hospital Pensacola



## Pensacola Community Map



<http://www.pensacola-florida.com/maps.html>

For a map identifying zip codes: [http://zipmaps.net/Florida/Escambia\\_County/Pensacola.htm](http://zipmaps.net/Florida/Escambia_County/Pensacola.htm)

# Escambia County Evac Routes and Zones



## Evacuation Routes

**Zone A** expecting a Tropical Storm of Cat 1 Hurricane storm surge is expected in the **Blue** area

**Zone B** expecting a Cat 2 Hurricane storm surge is expected to reach the **Yellow** area

**Zone C** expecting a Cat 3 Hurricane storm surge is expected to reach the **green** area

**Zone D** expecting a Cat 4 Hurricane storm surge is expected to reach the **amber** area

**Zone E** expecting a Cat 5 Hurricane storm surge is expected to reach the **red** area





Become a tourist here at NAS Pensacola and learn about the history and culture that makes NASP unique and exciting. Want to see America's first settlement? Want to see the amenities and offerings you may not know about on base? Stop by or call today and get signed up for your **FREE** ticket! Great way to meet people and network while getting chauffeured around.

**\*Drop-off child care available at local CDC.**

**DATE: First Wednesday of the month**

**TIME: 0900–1200**

**LOCATION: Fleet & Family Support Center**



**Call (850)452-5990 to RSVP**

Located at Fleet and Family Center, Bldg. 625, NAS Pensacola



## Calling all Single Sailors & Geo Bachelors!

**Now leasing townhomes on Base with most utilities included!**

- Walk to Work
- Fenced backyard
- Washer/dryer included
- 24/7 Maintenance
- Spacious floor plan



2 Bedrooms, 2 roommates: Only \$570 or \$770/per person\*  
3 Bedrooms, 2 roommates: Only \$590 or \$790/per person\*  
4 Bedrooms, 2 roommates: Only \$630 or \$830/per person\*

\*Rates provided are for unfurnished vs. fully furnished homes in Lighthouse Terrace. Homes are assigned on a first come, first serve basis. Pricing effective 3/2/17.

**Move In today!**

**884.334.0728**

1581 Duncan Rd. Bldg. 735 Pensacola, FL 32508



[NASPensacolaHomes.com](http://NASPensacolaHomes.com)





## **Quick Checklist for School Moves**

### **From the Parent/Guardian**

- Student's Birth Certificate
- Student's Health Record (Immunization, etc.)
- School Health Physical-within the last 12 months
- Legal Documents as Needed (Power of attorney, etc.)
- Proof of Residency/Military Orders
- LES if planning on using before/after school care, CDC

### **School Information**

- Address, Phone Numbers, Other Contact Information of sending school
- Course Description Book/Grading Scale (if available for 6<sup>th</sup> grade and above)

### **School Records**

**Schools that are in a state that is a member of the Interstate Compact must give unofficial copy of school records to parents.**

- Copy of Cumulative Folder (only the copy mailed between schools is considered official)
- Current schedule
- Report Cards
- Withdrawal Grades or Progress Reports
- Test Scores (Standardized or Special Program Testing, etc.)

### **Special Programs Records as Appropriate**

- Individual Education Plan (IEP)/Individual Accommodation Plan (504)/Gifted Program Description
- All current evaluations for special needs programs
- School Health plan (asthma, diabetes) These records are very important and should have doctor signature.
- Special dietary plan (with doctor approval/signature)

- English as a Second Language (ESL) or Bilingual Education
- At-Risk or Other Action Plans for Classroom Accommodations

### **Other Documents and Examples**

- Writing Samples and Other Work Examples
- Activities Records (co/extracurricular)
- Community Service or Service Learning
- Other Work or Performance Examples
- Academic Recognitions and Competition Participation

## Medical Conditions

Check all that exist

- ☐ No known medical conditions
- ☐ AIDS
- ☐ Hemodialysis
- ☐ Abnormal EKG
- ☐ Hemolytic Anemia
- ☐ Adrenal Insufficiency
- ☐ Hepatitis, Type: \_\_\_\_\_
- ☐ Alzheimer's
- ☐ Hypertension
- ☐ Angina
- ☐ Hypoglycemia
- ☐ Asthma
- ☐ Laryngectomy
- ☐ Bleeding Disorder
- ☐ Leukemia
- ☐ Cancer
- ☐ Lymphomas
- ☐ Cardiac Dysrhythmia
- ☐ Memory Impaired
- ☐ Cataracts
- ☐ Myasthenia Gravis
- ☐ Clotting Disorder
- ☐ Pacemaker
- ☐ Coronary Bypass Graft
- ☐ Renal Failure
- ☐ Dementia
- ☐ Seizure Disorder
- ☐ Diabetes, Type: \_\_\_\_\_
- ☐ Sickle Cell Anemia
- ☐ Eye Surgery
- ☐ Stroke
- ☐ Glaucoma
- ☐ Tuberculosis
- ☐ Hearing Impaired
- ☐ Vision Impaired
- ☐ Heart Valve Prostheses
- ☐ Vertigo
- ☐ Other: \_\_\_\_\_

This File of Life (FOL) is designed for one individual and we suggest that you keep it on your person at all times. The purpose of this voluntary FOL form is to provide more detailed medical information to the Emergency Medical Services (EMS) crew in the event of a medical emergency. Filling the form out in its entirety will minimize the on scene time and expedite transportation to the hospital. Once at the hospital this form will be handed over to the Emergency Department staff (as part of your patient care report). If you are leaving the area, please DO NOT throw this form away as the information contained can be useful to your local EMS or Fire Department. If you have any questions please call the NAS Pensacola Fire Station 2 at 850-452-3212/2998 or the NAS Whiting Field Fire Station 1 at 850-623-7193/7795. Please dial 911 for ALL emergencies. We hope you enjoy your stay and that we do not need this from you.

## In case of **EMERGENCY** dial 911

Name: \_\_\_\_\_

(1 File of Life per person, maintain possession)



Proudly serving  
 Naval Air Station Whiting Field,  
 Naval Air Station Pensacola,  
 Corry Station,  
 Sausley Field  
 &

Their surrounding communities

The Information herein is For Official Use Only (FOUO) which must be protected under the Privacy Act of 1974, as amended. Unauthorized disclosure or misuse of this PERSONAL INFORMATION may result in criminal and/or civil penalties.



## Medical Conditions

Check all that exist

- ☐ No known medical conditions
- ☐ AIDS ☐ Hemodialysis
- ☐ Abnormal EKG ☐ Hemolytic Anemia
- ☐ Adrenal Insufficiency ☐ Hepatitis, Type: \_\_\_\_\_
- ☐ Alzheimer's ☐ Hypertension
- ☐ Angina ☐ Hypoglycemia
- ☐ Asthma ☐ Laryngectomy
- ☐ Bleeding Disorder ☐ Leukemia
- ☐ Cancer ☐ Lymphoma
- ☐ Cardiac Dysrhythmia ☐ Memory Impaired
- ☐ Cataracts ☐ Myasthenia Gravis
- ☐ Clotting Disorder ☐ Pacemaker
- ☐ Coronary Bypass Graft ☐ Renal Failure
- ☐ Dementia ☐ Seizure Disorder
- ☐ Diabetes, Type: \_\_\_\_\_ ☐ Sickle Cell Anemia
- ☐ Eye Surgery ☐ Stroke
- ☐ Glaucoma ☐ Tuberculosis
- ☐ Hearing Impaired ☐ Vision Impaired
- ☐ Heart Valve Prostheses ☐ Vertigo
- ☐ Other: \_\_\_\_\_

This File of Life (FOL) is designed for one individual and we suggest that you keep it on your person at all times. The purpose of this voluntary FOL form is to provide more detailed medical information to the Emergency Medical Services (EMS) crew in the event of a medical emergency. Filling the form out in it's entirety will minimize the on scene time and expedite transportation to the hospital. Once at the hospital this form will be handed over to the Emergency Department staff (as part of your patient care report). If you are leaving the area, please DO NOT throw this form away as the information contained can be useful to your local EMS or Fire Department. If you have any questions please call the NAS Pensacola Fire Station 2 at 850-452-3232/2998 or the NAS Whiting Field Fire Station 1 at 850-623-7193/7795. Please dial 911 for ALL emergencies. We hope you enjoy your stay and that we do not need this from you.

In case of **EMERGENCY** dial 911

Name: \_\_\_\_\_

(1 File of Life per person, maintain possession)



Proudly serving  
 Naval Air Station Whiting Field,  
 Naval Air Station Pensacola,  
 Corry Station,  
 Sausley Field  
 &

Their surrounding communities

The Information herein is For Official Use Only (FOUO) which must be protected under the Privacy Act of 1974, as amended. Unauthorized disclosure or misuse of this PERSONAL INFORMATION may result in criminal and/or civil penalties.