



U.S. COAST GUARD SECTOR CORPUS CHRISTI



2016

YEAR IN REVIEW



FROM THE SECTOR COMMANDER

I am proud to work with you as part of the amazing team that is Sector Corpus Christi. In alignment with the Commandant's Direction, my Commander's Direction is amplified by these overarching principals: Proficiency, Pride and Professionalism, and Serving Others. I ask all of you - active duty, reservists, civilians, and auxiliaries - to internalize and help accomplish the following:

Proficiency:

- Continuously strive for mission excellence. Recognition for being the best is nowhere near as important as simply *being* the best.
- Become the absolute expert in your specialty and commit every day to make yourself, your peers, and your subordinates the best in your area of expertise.
- Learn sound risk management and use it. It is essential to mission excellence. It is *not* risk aversion – it *is* understanding both tangible and intangible risks and gains, and managing the relationship between both.
- Keep yourself physically, mentally, and intellectually fit. Personal wellness is vital in our demanding line of work. Use the tools provided to you and work together to maintain fitness.

Pride & Professionalism:

- Be proud of your service and your unit, and renew your commitment to adhere steadfastly to our core values of *Honor, Respect, and Devotion to Duty*.
- Commit yourself daily to improve as a leader, and help your colleagues and subordinates do the same. Learn from your mistakes and share that knowledge so others don't make the same ones.
- Treat our facilities, assets, and equipment, as if they were your own. The public has entrusted us as custodians of these resources, and we have a duty to preserve them.
- Do your part to maintain a positive command climate; participate in the life of your unit; enjoy the camaraderie of your shipmates and learn what they do. Enjoy the work you do...you work with outstanding people.

Serving Others:

- Keep your focus on "customers" at all times, and make it your goal to provide the best service possible.
- Know your peers and subordinates, engage them often, and help them be successful. The extent of your influence depends on the depth of your concern for others. Never pass up an opportunity to look out for a fellow member.
- Set expectations early, provide direct and timely feedback, and keep the lines of communication open up, down, and across the chain of command. Accountability is a force multiplier.
- Seek out partnerships and relationships with our key stakeholders, engage them regularly, value their input, and involve them in your planning and operations whenever practical.

I ask for your active, vigorous, and innovative support of these goals. Semper Paratus.



CAPT R. A. Hahn
Sector Commander

TABLE OF CONTENTS

| | |
|---|----|
| Roles and Missions | 4 |
| Area of Responsibility | 5 |
| Search and Rescue | 6 |
| Environmental Protection | 7 |
| Maritime Security | 9 |
| Air Operations | 12 |
| Contingency Planning & Force Readiness | 16 |
| Prevention..... | 18 |
| Waterways Management | 20 |
| Community Outreach | 21 |
| Sector Corpus Christi Contact Information | 24 |



Cover: Sector Corpus Christi personnel muster for an all-hands photo on the flight line outside Hangar 41 – Naval Air Station Corpus Christi, TX.

Above: CGC STEELHEAD and an Air Station Corpus Christi MH-65 conduct hoist training.

ROLES AND MISSIONS

The United States Coast Guard is the Nation's premier multi-mission, maritime service and one of the Nation's five armed services. Our core missions along the South Texas Coastal Bend include enhancing the safety and security of the Maritime Transportation System, enforcing maritime boundaries, conducting search and rescue operations, and protection of the environment.

Coast Guard Sector Corpus Christi's Mission

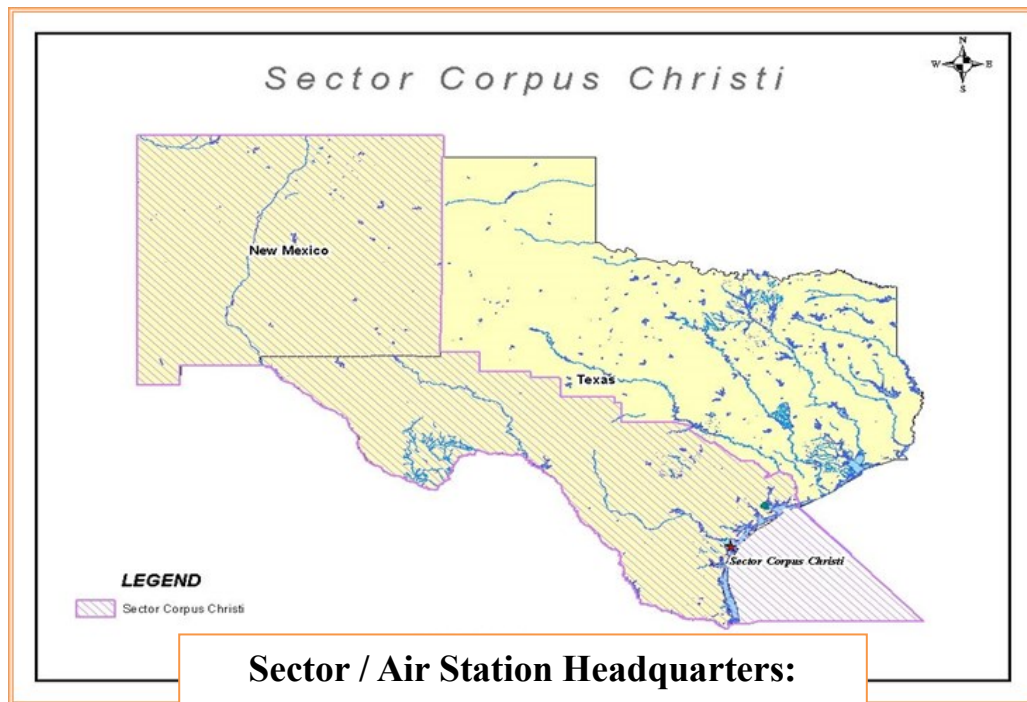
Through the Coast Guard's Core Values of Honor, Respect, and Devotion to Duty, we will serve the American people in all that we do. Our drive is to continuously provide for the safety and security of the Maritime Transportation System, to protect the environment, and to ensure the safety of the boating public and commercial interests vital to the continued prosperity of this great Nation.



Above: Response assets represented by numerous agencies of the Corpus Christi-Regional Coordinating Mechanism (CC-RECOM) underway in Corpus Christi Bay.

AREA OF RESPONSIBILITY

Sector Corpus Christi's area of responsibility (AOR) is bounded on the Northeast by (Colorado River) and on the South by the U.S. / Mexico international border, extends 200 NM offshore. It extends inland from South Texas to include the entire state of New Mexico. The Sector's missions are accomplished by 662 dedicated Active Duty, Reserve and Civilian personnel assigned to four Coastal Patrol Boats, two Marine Safety Detachments (MSD), one Aids to Navigation (ATON) construction tender, three small boat stations, three aids to navigation teams (ANT) an Air Station, and Sector Headquarters. The Sector is further supported by nearly 400 volunteer Coast Guard Auxiliaries.



Sector / Air Station Headquarters:
Corpus Christi, TX



SEARCH AND RESCUE

Search and Rescue (SAR) is one of the Coast Guard's most significant missions. Minimizing the loss of life, injury, property damage or loss by rendering aid to persons in distress and property in the maritime environment has always been Sector Corpus Christi's priority in the South Texas region.



Above: A 29' RB-S from Station Port Aransas responds to a capsized vessel in the Corpus Christi inner harbor.

2016

Total SAR Cases:

275

Property Saved &
Assisted:

\$1.5 Million

Lives Saved &
Assisted:

465

Sector Corpus Christi's humid subtropical climate supports recreational boating, swimming, and surfing year around. The weather, coupled with extensive gulf and bay shorelines, represent a significant opportunity for commercial and recreational citizens to find themselves in need of Coast Guard assistance.

The Sector Corpus Christi Command Center is staffed 24 hours a day, 365 days a year to ensure the public can notify the Coast Guard of persons in distress. The Command Center is well-integrated with all city, county, state, and federal partner agencies. These relationships allow for close communication with all available assets which can render assistance to those in distress.



Above: An MH-65 aircrew from AIRSTA Corpus Christi safely returns after hoisting a man rescued at sea.

ENVIRONMENTAL PROTECTION

Protecting the environment is another of Sector Corpus Christi's primary missions. A plethora of wild-life inhabit the coastal region, with numerous sensitive habitats throughout the AOR. The commercial activities brought forth by maritime commerce, and the abundant natural resources beneath the Gulf of Mexico create an environment that Sector Corpus Christi remains driven to protect. When spills do occur, we turn to our well-established partnerships with local, state, and federal agencies to ensure effective response and recovery actions are implemented in a timely fashion.



Above: Abandoned MU818 Natural Gas Platform 3.5 miles offshore spraying natural gas and condensate.

Notable Pollution Cases

Rig Leak—Packery Channel: In August, Sector Corpus Christi responded to an abandoned rig leaking natural gas and condensate south of the Packery Channel. The incident prompted a multiagency response as a responsible party was not identified. Agencies included Sector Corpus Christi IMD, Texas General Land Office, and Texas Railroad Commission. Sector Corpus Christi issued a safety broadcast and provided over flights. Texas Railroad Commission assumed lead agency and hired a contractor to secure the leak.

Tar Ball Season: During the warmer months, typically July, August, and September, the beaches that line the Gulf of Mexico are frequently inundated with tar balls. Tar balls, although a historical constant in the Gulf of Mexico, continue to capture the interest of the public and media.

This past year, tar ball season was congruent with weather patterns within the gulf. In early May, there were very large tar mats that washed up along the beaches of South Padre Island with the majority of tar washing up between June and July. Unlike in past years where the tar was fresh, this season the majority of tar was extremely weathered crude. In FY16 over 1,720 gallons of tar was removed from the beaches within Sector Corpus Christi's AOR. The federal pollution fund was kept open to support continuous response efforts throughout the height of hurricane season.



Left: A 550 gallon tar patty was discovered on Port Aransas Beach. \$4,500 was charged to the Oil Spill Liability Trust Fund (OSLTF) for clean-up and disposal expenditures.

Right: An oversized tar patty was discovered on South Padre Island. Cameron County Parks provided a front-end loader to support removal and disposal operations.



ENVIRONMENTAL PROTECTION

Interagency Cooperation

In order to protect the environment, Sector Corpus Christi relies heavily on partnerships with federal, state and local agencies including the Texas General Land Office (TGLO), Texas Parks and Wildlife (TP&W), Texas Commission on Environmental Quality (TCEQ), and Texas Railroad Commission (TRC). Additionally, Sector Corpus Christi works with the Environmental Protection Agency's Natural Disaster Operations Workgroup (NDOW) to develop, review, exercise, and implement oil pollution and hazardous substances response plans.

The waterways within Sector Corpus Christi's AOR are carrying an increasing amount of vessel traffic as a result of offshore development and the Eagle Ford Shale Oil and Natural Gas Play. Numerous Liquefied Natural Gas (LNG) facilities are slated to be built in the AOR, which will increase the amount of vessel traffic in the future. In fiscal year 2016 Sector Corpus Christi had 135 marine environmental cases; six cases were federalized.

Government Initiated Unannounced Exercises

In 2016, Sector Corpus Christi's Incident Management Division (IMD), MSD Brownsville, and MSD Victoria conducted four Government Initiated Unannounced Exercises (GIUE) evaluating maritime transportation related (MTR) facilities on oil spill response preparedness. The GIUE program is part of the national Preparedness for Response Exercise Program (PREP) and is designed to evaluate industry's emergency procedures in response to a simulated average most probable discharge. The facility's oil spill response plan is tested for notifications, response time, and deployment of facility owned equipment or the Oil Spill Response Organization's (OSRO) equipment. A GIUE serves as an opportunity for the Coast Guard to ensure industry compliance with the required response plans and to evaluate the readiness of OSROs to deploy in fulfillment of contractual obligations.

Regional Response Team VI (RRT-6)

Sector Corpus Christi is a member of RRT-6, a multi-agency forum, co-chaired by the Coast Guard and EPA. RRT-6 is designed to provide a conduit for federal and state agency field offices to exchange information about their abilities to respond in the event of a spill. RRT-6 represents all federal and state response agencies within the states of New Mexico, Texas, Oklahoma, Arkansas, and Louisiana. The four major responsibilities of RRT-6 are: response, planning, training, and coordination. There are 13 RRTs throughout the U.S., and each is responsible for the creation of a Regional Contingency Plan (RCP). The RCP is designed to ensure the roles and responsibilities of all participating agencies are defined and clear.

South Texas Coastal Zone Area Committee (STCZAC)

STCZAC, co-chaired by Sector Corpus Christi and TGLO, is a committee of local, state, and federal stakeholders within the Sector's AOR. STCZAC developed the Area Contingency Plan (ACP) to provide spill mitigation and response strategies for the local AOR. Within the ACP, users will find specific geographic response strategies that provide tactics, techniques, and procedures designed to deliver the most effective and efficient spill response possible. Furthermore, this comprehensive plan identifies at-risk wildlife, wetlands, and other vulnerable parts of the Texas Gulf Coast ecosystem.



Above: A Sector Corpus Christi member from IMD provides a presentation on response activities at the STCZAC meeting.

ENVIRONMENTAL PROTECTION

Genesis Marine Barge GM3812 Overflow: In June, Sector Corpus Christi responded to an overflow of heavy crude oil on Genesis Marine Barge GM3812 during an active transfer. Approximately one barrel of the heavy crude oil was spilled on the deck of the barge and one barrel was spilled into the Corpus Christi inner harbor. The Corpus Christi Oil Spill Control Association immediately responded to boom off the vessel and the responsible party contracted with Miller Environmental Services for clean up and decontamination of the barge. A \$500 notice of violation was issued and a case is pending against the mariners credentials.



Above: Point of overboard discharge of heavy crude oil from a Genesis Marine barge.

Sinking of T/V LIBRA: In October, MSD Brownsville responded to a tug vessel that sank in the Port of Harlingen with a potential discharge of 2000 gallons of diesel fuel. This incident



Above: T/V LIBRA partially submerged during salvage operations in the Port of Harlingen.

involved two distinct response efforts: pollution response and salvage operations. The tug vessel owner assumed responsibility of the clean up and salvage operations with assistance from Coast Guard and Texas General Land Office. Divers were able to successfully refloat the vessel using air bags with a total discharge of 990 gallons of diesel fuel.

MARITIME SECURITY

Maritime Boundary Line (MBL)

The porous nature of the US / Mexican (MX) border poses significant threats to the nation including the smuggling of narcotics and illegal migrants. Additionally, depleted MX fish stocks have increasingly driven MX fishermen into the US Exclusive Economic Zone (EEZ) where they illegally harvest lucrative reef fish and shark. Transnational Criminal Organizations (TCO) typically employ MX lanchas to carry out these illicit activities within the maritime domain.

In 2016 Sector Corpus Christi detected 145 lancha incursions and successfully interdicted 45 lanchas. As a direct result, 21 miles of long-line gear were removed from US waters and 1,408 Red Snapper and shark were seized and or released.

MARITIME SECURITY

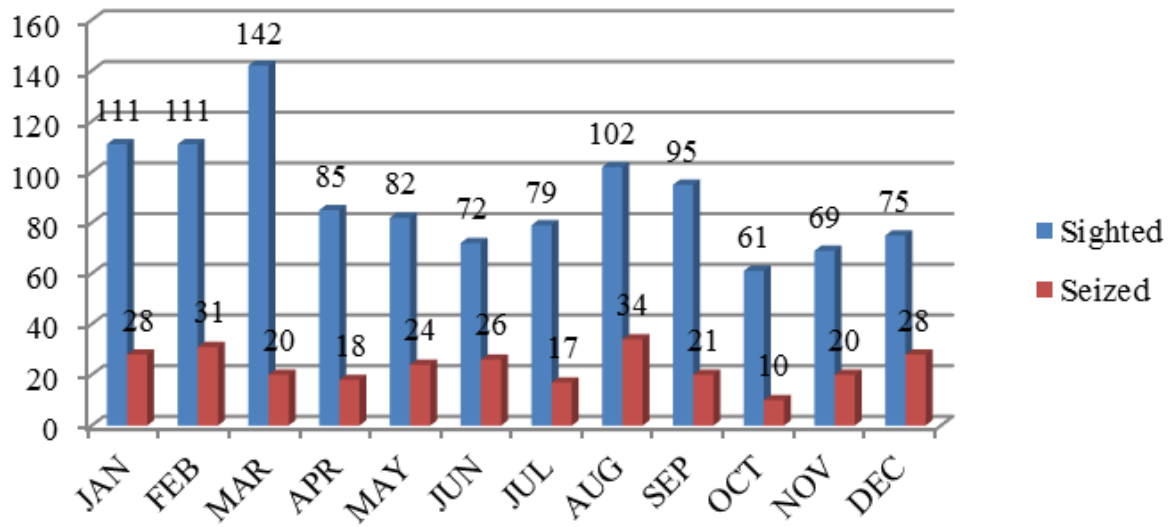


Above: A Mexican lancha was observed illegally fishing within the U.S. EEZ.



Above: Seized catch from a Mexican lancha on display at STA South Padre Island.

MARITIME SECURITY



Above: Although lancha sightings were continuous throughout the year, sightings peaked between the months of January – March.

Corpus Christi—Regional Coordinating Mechanism (CC-ReCoM)

CC-ReCoM Partners

- US Coast Guard (USCG)
- Customs and Border Protection (CBP)
- Office of Air and Marine (OAM)
- Office of Field Operations (OFO)
- Texas Parks and Wildlife (TP&W)
- Padre Island National Seashore Rangers (PINS)
- Inner Harbor Port Police
- Joint Task Force-North (JTF-N)

The maritime threat along the US/MX border and the Texas Gulf Coast is compounded by the vastness of the area and limited law enforcement resources. In order to deny, disrupt and dismantle transnational criminal organizations (TCOs) from successfully operating within the Sector Corpus Christi AOR, CC-ReCoM was developed. CC-ReCoM incorporates Department of Homeland Security (DHS) component agencies, and State and Local and partners to improve operational awareness through coordinated, unified, and timely information sharing regarding daily operations and plans. This multi-agency and bi-national approach ensures that component resources are being utilized in the most efficient and effective means possible.

Throughout 2016, Sector Corpus Christi and CC-ReCoM partners were involved in numerous multi-agency operations aimed at improving security throughout the waterways. Utilizing a combination of USCG and other DHS agency surface and air assets brokered through CC-ReCoM, a robust presence along the U.S./MX maritime border was successfully implemented.

MARITIME SECURITY



Above: A Station South Padre Island RB-S and U.S. Customs & Border Protection vessel conduct joint operations near the MBL.

Surge operations were conducted throughout the year under the umbrella of Operation SEA SERPENT, some are named independently. Operation BEACH ACCESS ran from June 6 – July 3, 2016 on South Padre Island. This U.S. Customs and Border Protection-led operation fused USCG air and surface assets with a U.S. Marine Corps ground sensor platoon. Air Station Corpus Christi provided vital air coverage to surface assets, resulting in the seizure of over 668 lbs of contraband at sea.

CC-ReCoM partners joined forces during Operation DRUM in an effort to interdict Mexican lanchas involved in human trafficking and narcotics smuggling along the Texas Gulf Coast beaches. This operation leveraged the operational expertise of TP&W, CBP's Office of Air and

Marine (OAM), Homeland Security Investigations (HSI) – Corpus Christi, United States Border Patrol, and the U.S. Coast Guard. Combined efforts resulted in multiple vehicles and persons being checked through numerous LE databases, the seizure of a vehicle after determining its operator to be under the influence of alcohol, and the location of a suspected smuggling vehicle operating on a federal highway near the border.

AIR OPERATIONS

Search and Rescue

2016

Total Flight Hours:

4589

SAR Flight Hours:

398

LE Flight Hours:

2450

Air Station Corpus Christi serves as the air resources provider for all Sector Corpus Christi missions. To meet this responsibility, Air Station Corpus Christi maintains a constant alert with both fixed and rotary wing aircraft. 2016 marked the first year the HC-144 was kept in a B-0 status, ready to respond to no-notice events, and greatly increasing Air Station Corpus Christi's alert posture, response time, and ability to execute a critical Coast Guard mission.



Above: An MH-65 sits in a community college parking lot after a successful MEDEVAC. A Sector Corpus Christi aircrew deployed to North Carolina in support of Hurricane Matthew response efforts.

AIR OPERATIONS

Protection of Living Marine Resources

We protect against illegal fishing and indiscriminate destruction of living marine resources and respond to oil and hazardous material spills--both accidental and intentional. Air Station Corpus Christi aircraft patrol fishing grounds and enforce regulations and law regarding the US EEZ.

Public Affairs

Air Station Tours:

28

Airshows:

4

Flyovers:

5

Static Displays:

3

Notable SAR Cases

An Air Station Corpus Christi HC-144 responded to a MAYDAY call on VHF Ch.16 from a commercial fishing vessel taking on water offshore of Port Aransas, TX. The HC-144 dropped a dewatering pump to the vessel and a MH-65 hoisted the vessel's ailing Captain and completed a medical evacuation (MEDEVAC) to a local hospital. A 45' Response Boat-Medium (RB-M) from Station Port Aransas towed the fishing vessel safely to shore.



Above: HC-144 demonstrates dropping a dewatering pump during an airshow.



Above: An HC-144 Forward Looking Infrared camera captures a CG unit responding to a vessel taking on water.

An Air Station Corpus Christi MH-65 MEDEVAC'd a 34-year old man off the 600-foot bulk carrier, M/V GLOBAL ANDES, 10 miles off shore in the Brownsville Anchorage. The air crew transported the man to Valley Regional Medical center in Brownsville, TX.



Above: MH-65 flight mechanic lowers a rescue swimmer to the 600-foot bulk carrier, M/V Global Andes.



Above: AIRSTA Corpus Christi aircrew stands in front of a MH-65 after completing a MEDEVAC.

AIR OPERATIONS

Notable LE Case

On the night of 14 August 2016, an HC-144 aircrew from Air Station Corpus Christi was executing a law enforcement patrol that ultimately led to the apprehension of three Mexican lanchas and 14 POB. It was a highly successful mission highlighted by impressive teamwork and asset coordination. The HC-144 aircrew remained over head while vectoring Coast Guard surface assets to include two STA South Padre Island small boats and CGC MANATEE. After nearly three exhausting hours of hot pursuit, all three lanchas were apprehended by Coast Guard boarding teams. Joint efforts between our air and boat crews continue to safeguard our waters, and ensure we maintain a watchful eye.

Open Ocean Water Survival Training

Multiple Sector Corpus Christi assets and the 433rd Airlift Wing SERE instructors conducted Sector's first ever joint Open Ocean Water Survival Training. The training provided a realistic water and combat survival experience as the trainees jumped into the water, swam to an inflatable life raft, and conducted training on surviving at sea for several hours should they find themselves in a real life survival situation. Air Force trainees used signal mirrors and pyrotechnics to indicate their position. An Air Station Corpus Christi HC-144 participated in the exercise and gained valuable experience in searching for the distress signals. To complete the training an Air Station Corpus Christi MH-65 hoisted several trainees from the water to provide the training experience of a successful recovery.



Above: An MH-65 Dolphin helicopter from AIR-STA Corpus Christi, hoists U.S. Air Force SERE trainees during a joint training exercise.

Promoting Coast Guard Aviation

In 2016 Air Station Corpus Christi HC-144 pilots and aircrew provided 28 Air Station tours to young students and local organizations. Community members have a chance to tour the HC-144 and MH-65 that patrol our area of responsibility while learning about aviation careers in the U.S. Coast Guard.



Above: Coast Guard pilots and aircrew participated in the Organization of Black Aerospace Professionals Aviation Career Education Academy in Orlando, FL.

AIR OPERATIONS



Above Left: Air Station Corpus Christi HC-144 aircrew participated in the Wings over South Texas airshow. Members of the US Army's Black Daggers parachute demonstration team jumped from the HC-144.

Above Right: MH-65 aircrew members provide a static display during the Wings over South Texas airshow.



Above Left/Above Right: Students from the local community tour the Air Station Corpus Christi hangar and aircraft.



Above: 2016 marked 100 years of aviation for the U.S. Coast Guard.

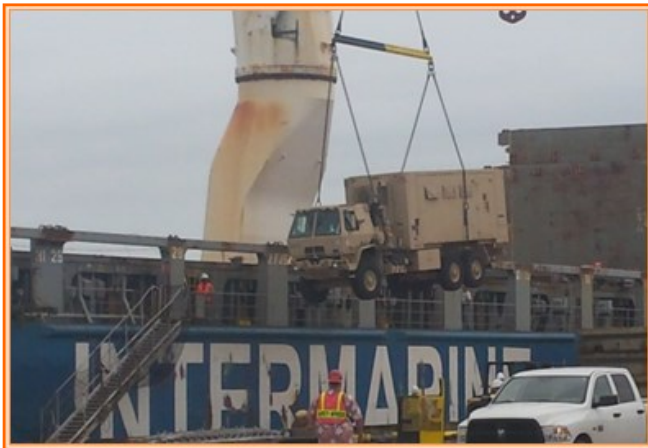
CONTINGENCY PLANNING & FORCE READINESS

Contingency Planning and Force Readiness (CPFR) oversees the Sector's numerous contingency plans such as Severe Weather, Continuity of Operations, Area Contingency Plan, and the Area Maritime Security Plan. Additionally, CPFR conducts training and exercises to test, evaluate, and continually improve these plans. The Ready for Operations personnel conduct operational readiness assessments on Sectors operational units (Stations, WPB's, and ATON units). The Reserve Force Readiness Staff assists Coast Guard Reserve personnel in achieving the necessary training, qualification and personal readiness to support Coast Guard contingency operations.

In 2016, CPFR hosted a Maritime Awareness Security Terrorism Training (MASTT) seminar focusing on cyber security in the maritime environment. This event was a huge undertaking with over 220 federal, state, local, industry, and academia representatives receiving critical information, and best practices, on preventing and detecting cyber threats. Additionally, Sector Corpus Christi conducted safety and security operations for three Military Outload (MOL) Operations supporting overseas contingency operations. The objective was to ensure safe and secure vessel and pier side operations – cargo transportation, staging, loading, stowage, vessel transits and shipboard safety systems. Two of the MOL operations supported OPERATION INHERENT RESOLVE Combatant Commanders' mission to "degrade and ultimately destroy the terrorist group ISIL".



Above: Sector Corpus Christi Incident Management Team (IMT) personnel establish an incident command post during a severe weather exercise in Robstown, TX.



Above: MOL operations within the Port of Corpus Christi.

In May of 2016, Contingency Planning conducted a severe weather full scale exercise, drilling not only active duty, but reserve forces. This highly successful exercise focused on preparations for a hurricane striking the area, as well as, post storm recovery operations. This exercise was just one of several conducted throughout the year in preparation for Hurricane season. Additionally, throughout the year, Contingency Planning has brought in the Coast Guards' Incident Management Assist Team (IMAT) to supplement exercises and hold workshops focusing on the Incident Command System (ICS) and allowing for Active Duty and Reserve Forces to further enhance their proficiency and gain valuable qualifications.

CONTINGENCY PLANNING & FORCE READINESS

In May of 2016, CPFR conducted a severe weather full scale exercise, drilling not only active duty, but reserve forces. This highly successful exercise focused on preparations for a hurricane striking the area, as well as, post storm recovery operations. This exercise was just one of several conducted throughout the year in preparation for Hurricane season. Additionally, throughout the year, Contingency Planning has brought in the Coast Guards' Incident Management Assist Team to supplement exercises and hold workshops focusing on the Incident Command System and allowing for Active Duty and Reserve Forces to further enhance their proficiency and gain valuable qualifications.



Left: Sector Corpus Christi personnel along with the IMAT participate in an ICS exercise in September, simulating an operations brief for the grounding of a barge and potential threat of an oil spill.

During the past year, the RFO team conducted 11 visits to subordinate units ensuring all adhered to policy and operated in a safe manner. Additionally, the RFO team conducted 7 team coordination training events.

Additionally, CPFR oversees numerous committees that bring together community and port partners. The South Texas Coastal Zone Area Committee is a partnership of Federal/State/Local agencies to work as a team to coordinate removal efforts of any oil or hazardous substance within the South Texas Zone.

The South Texas Area Maritime Security Committee is a partnership of Federal, State, Local, and Industry stakeholders to enhance interoperability, improve communications and address maritime security issues. The Port Readiness Committee is a partnership of agencies which ensure safe and secure Military Outload operations within the port. During the previous year over 22 coordination meetings were held with all of these different committees furthering safety and security throughout this Captain of the Port zone.



Above: The RFO team conducts a safety inspection of Personal Protective Equipment at Station South Padre Island.

PREVENTION

Sector Corpus Christi Prevention Department provides oversight and support for activities and operations with the objectives of facilitating commerce, ensuring the safety of waterway users, preventing marine casualties and hazardous discharges, and monitoring security incidents that could impact the viability of the maritime transportation system (MTS).

Prevention Department Activities:

| | |
|---------------------------------------|------|
| PSC Safety & Security Exams | 283 |
| Domestic Vessel Inspections | 210 |
| Commercial Fishing Vessel Inspections | 76 |
| Facility Inspections | 78 |
| Vessel Arrivals | 1235 |

Marine Investigations

The Investigations Division conducts investigations of incidents that occur on commercial vessels in the Sector's AOR. Their job is to identify the factors that led to these events in order to prevent similar incidents from occurring in the future. In addition to investigations of maritime accidents, the division also conducts investigations of merchant mariners that commit actions of misconduct or violations of law. During 2016, Sector Corpus Christi investigated 87 reported marine casualties, 7 of which resulted in injuries or fatalities, and 15 which were alleged misconduct or violation of law by a credentialed mariner.

Reportable Marine Casualties in 2016

| | | | |
|--------------------|----|---------------------|-----|
| Allisions | 15 | Fire | 02 |
| Collisions | 04 | Groundings | 19 |
| Equipment Failures | 26 | Loss of Life/Injury | 1/6 |
| Sinkings | 02 | Mariner Misconduct | 15 |



Left: The freight ship *Ocean Freedom* collided with a barge from Kirby Inland Marine. The incident was a joint investigation with the National Transportation Safety Board (NTSB).

Right: The tug *Admiral* experienced a major fire in the engine room. The investigation was conducted with the NTSB, and it discovered that the fire was from an engine over speed which exploded severely burning two crewmembers.



PREVENTION

Marine Safety Detachments (MSDs)

MSD Brownsville and MSD Victoria are responsible for the southern and northern reaches of the Sector Corpus Christi COTP zone, respectively. These units shoulder a significant workload that requires expert proficiency and knowledge in all Prevention-related disciplines and even elements of Response.

MSD Brownsville Activities in 2016

| | |
|---------------------------------------|-----|
| PSC Safety & Security Exams | 63 |
| Domestic Vessel Inspections | 44 |
| Commercial Fishing Vessel Inspections | 53 |
| Facility Inspections | 112 |
| Marine Casualty Investigations | 13 |
| Enforcement Actions | 20 |
| Marine Casualty Investigations | 17 |
| Vessel Arrivals | 226 |

MSD Victoria Activities in 2016

| | |
|--|-----|
| Domestic Vessel Inspections | 24 |
| Condition of Entry Exams | 02 |
| Certificate of Compliance Exams | 12 |
| PSC Safety & Security Exams | 26 |
| New Construction Oversight Inspections | 03 |
| Facility Inspections | 47 |
| Marine Casualty Investigations | 33 |
| Pollution Investigations | 08 |
| Vessel Arrivals | 285 |

Notable Inspection Events

- While conducting a dry dock inspection on the passenger vessel ISLANDER, MSD Brownsville noted significant pitting in the aluminum hull in way of the stern. The owner submitted a proposal to clad-weld the pits in lieu of cropping and renewing the affected area. The proposal was denied by MSD Brownsville. The owner appealed the MSD's decision, which was upheld by District Eight.
- MSD Brownsville identified that a local parasailing company's unmarked and unlit platform posed a possible hazard to navigation. The platform was removed from waterway and allowed to be utilized during the day and during clear visibility conditions only. Coordination with State and Federal partners ensured proper lighting of the platform, and that permits were issued for continued operation.
- MSD Brownsville discovered that a Port of Brownsville facility was no-longer exempt from MTSA regulations as a "general shipyard" due accepting foreign cargo vessels for load-out. The facility's legal team requested a waiver from 33 CFR 105 regulations. The shipyard ultimately met MTSA requirements, in lieu of waiver, after working closely with MSD Brownsville's facility inspectors to overcome compliance obstacles. The \$500 million-dollar project met critical shipping timelines.



Above: A Sector Corpus Christi marine inspector works with a local industry representative at one of the MTSA facilities in the Port of Corpus Christi.

WATERWAYS MANAGEMENT

Aids to Navigation (ATON)

The Sector Corpus Christi's ATON program in South Texas manages, influences, and provides access to a safe, secure, and efficient navigation system. The program is executed in Sector Corpus Christi by three ATON units and one Inland Construction Tender (WLIC) which set and maintain over 1,500 buoys and shore-aids on all three major ship channels and the Gulf Intracoastal Waterway. The WLIC is strategically located in Corpus Christi to respond to navigation concerns arising in the Sector's vast area of responsibility. They are aided by a Waterways Management Division that works with government partners and industry to share information and respond to arising navigation concerns.

The program facilitates maritime commerce by minimizing disruptions to the movement of goods and people, while maximizing recreational enjoyment and economic reliability on navigable waters, all while maintaining adaptable waterway restoration capabilities when disruptions occur. Sector Corpus Christi's ATON program resulted in a 95% aid availability rate, an important measurement of the reliability and functionality of the ATON system.



Above: CGC MALLET celebrated 53 years of service in Corpus Christi's AOR..

This year, Sector Corpus Christi's Waterways staff worked very hard on a short deadline, highly visible, and political project to mark the La Quinta Channel Extension Project. This was a \$65 million project with a \$13 billion industrial impact to the local economy. Waterways staff, CGC MALLET, and ANT Corpus Christi worked efficiently and seamlessly to install ATON to meet the shipping demands of the channel.



Left: Crew from ANT South Padre Island work a buoy in the Brownsville Ship Channel.

WATERWAYS MANAGEMENT

Regattas & Marine Parades / Events

The Marine Event Permitting process facilitates the safe and effective management and use of waterways by local industry and the general public. Sector Corpus Christi oversaw 31 marine events and permit applications. Working within established partnerships with federal, state and local agencies, we successfully managed finite resources and mitigated safety and environmental impact concerns associated with these events.

Navigation Safety Assessments

Sector Corpus Christi Waterways Management Division works closely with the U.S. Army Corps of Engineers (USACE) Galveston District throughout the region. While USACE bears approval authority for building permits for structures in, on or over the navigable waters of the U.S., the Coast Guard reviews all permits submitted to USACE for potential impacts to vessel navigation. In 2016, Sector Waterways staff reviewed 42 USACE permits.

COMMUNITY OUTREACH

Sector Corpus Christi's dedication expands beyond our traditional missions. Personnel throughout the Sector's AOR, from South Padre Island to Port O'Connor, routinely assist in the community conducting community service as well as community outreach; we constantly strive to make a positive impact on the lives of our neighbors.



Above: Member's from Sector/Air Station Corpus Christi dedicate their time and skills to building homes with the Habitat for Humanity.

COMMUNITY OUTREACH



Left: A Sector Corpus Christi member addresses a public forum on hurricane safety at the 2016 Coastal Bend Hurricane Conference.

Right: Sector Corpus Christi members volunteer at the Ronald McDonald house during Volunteer Day 2016.



Left: Crew from ANT Port O'Connor participate in a marine event with the Wounded Warriors Project.

Right: In cooperation with Driscoll Children's Hospital, Sector Corpus Christi hosted a "Pilot for a Day" event for an area child. He was given a tour of the aircraft and rescue swimmer operations.



COMMUNITY OUTREACH



Above: Sector Corpus Christi loans one of its members to a local elementary school to be a "Celebrity Substitute" and teach the class about the Coast Guard.



Above: Members of MSD Victoria dedicate their time assisting Port O'Connor Elementary School lay new mulch and organize their playground equipment.

SECTOR CORPUS CHRISTI CONTACT INFORMATION

24-Hour Emergency Contact Information

| | |
|--------------------------------------|--------------|
| Sector Corpus Christi Command Center | 361.939.6293 |
| National Command Center | 800.424.8802 |

Command Contact Information

| | |
|-----------------------------|--------------|
| Command Executive Assistant | 361.939.6269 |
| Command Fax Number | 361.939.6240 |

Sector Corpus Christi's Web Address:
<https://www.uscg.mil/d8/sectcorpuschristi>

Sector Corpus Christi Departments

| | |
|-----------------------------|--------------|
| Public Affairs | 361.939.6232 |
| Domestic Vessel Inspections | 361.888.3162 |
| Investigations | 361.888.3162 |
| Waterways Management | 361.888.3162 |
| Facility Inspections | 361.888.3162 |
| Incident Management | 361.888.3162 |
| Enforcement | 361.939.6272 |
| Contingency Planning | 361.939.6243 |
| Intelligence | 361.888.3177 |
| Logistics | 361.939.6252 |

Sector Corpus Christi Sub-Units

| | |
|--------------------------------------|--------------|
| Marine Safety Detachment Brownsville | 956.832.0517 |
| Marine Safety Detachment Victoria | 361.582.0362 |
| Station South Padre Island | 956.364.7433 |
| Station Port Aransas | 361.749.5217 |
| Station Port O'Connor | 361.983.2617 |
| ANT Corpus Christi | 361.844.6521 |
| ANT Port O'Connor | 361.983.4313 |
| ESD Corpus Christi | 361.844.6582 |
| CGC ALLIGATOR | 956.364.7438 |
| CGC COHO | 361.844.6551 |
| CGC MALLETT | 361.844.6531 |
| CGC MANATEE | 361.844.6541 |
| CGC STEELHEAD | 361.749.0062 |