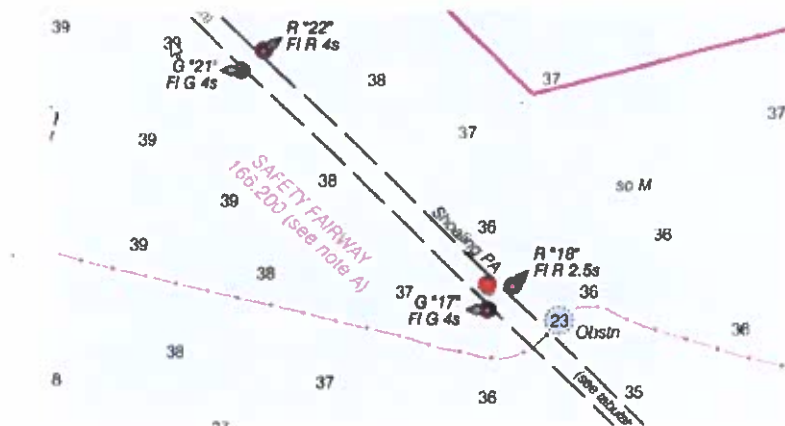




## Marine Safety Information Bulletin 45-20 October 19, 2020

### Obstruction Sabine Bank Channel - Rig JASMINIA Update 1

The large semi-submersible rig JASMINIA remains stationary in Sabine Bank Channel near gated buoys 17 and 18. The location of the rig prevents vessels with drafts greater than 32-feet from safely transiting into the Sabine-Neches Waterway.



The owner has initiated response efforts. Personnel are on board the rig conducting an assessment. Salvage plans are being developed and reviewed. U.S. Army Corps assets are surveying the area in the area immediately adjacent to the ship channel to determine if deeper draft vessels might safely pass the rig in the safety fairway. The U.S. Coast Guard and U.S. Army Corps of Engineers are actively monitoring response efforts to ensure expeditious removal of the rig from the channel.

The Port Arthur Captain of the Port will continue to host Port Coordination Team (PCT) calls each day until the channel is open to marine traffic.

This notice will be posted on the HOMEPORT website <http://homeport.uscg.mil> and the VTS Port Arthur website at <https://www.atlanticarea.uscg.mil/vtsportarthur/>. If you have any questions, please call MSU Port Arthur at (409) 723-6500 or MSU Lake Charles at (337) 912-0073.

*M. A. Wike*

M. A. Wike  
Captain, U. S. Coast Guard  
Captain of the Port